

11 Things to do this Weekend (Jan 23- Jan 25)

Is it Spring yet? We've had quite a bit of precipitation to start our Winter this year, but luckily not much in terms of snow. This weekend will be a cool one with high temperatures of 37 degrees. Not bad. Outside of Saturday's mix of rain and snow, we will have a sunny weekend. The coldest temperatures that we'll experience will be Sunday's low of 18 degrees. While this time of year, there are fewer events on the South Coast, there are still some pretty fun things to do, so hit the road!



As always, click on the title for more or detailed information on the event. Most of the events were pulled from our [event calendar](#) where you can find hundreds of local area events each month. The event calendar is FREE, so if you are a local business, and not taking advantage of FREE publicity, shame on you! Are you a local business and want to sponsor this high traffic, weekend guide? Contact info@newbedfordguide.com for more details. Have an event to add? Check out our [tutorial](#). For more info, you can click on each title. Know of another event this weekend? Post a reply!

Friday, January 23rd

Painting with a Splash: Lighthouse w/ Fritz (7:00pm)

Welcome to Painting with a Splash Where you are the artist! Painting with a Splash is the newest addition to Historic Whaling City Downtown New Bedford. Bringing you an experience of art as entertainment. Add a little wine (BYOB) that will surely tap into your creative side. With step by step instruction and a little music, you and your friends will create the evenings featured painting with a splash of your own uniqueness. NO EXPERIENCE NECESSARY! Just a desire to have fun.

Little theatre: David Mamet's "Oleanna" (Fall River) (7:30pm)

Little theatre presents David Mamet's "Oleanna." David Mamet, one of America's foremost modern playwrights of Glengary Glen Ross fame, crafts this suspenseful and controversial play. A college student drops by her professor's office, allegedly to clarify class notes. During two subsequent meetings, their discussion evolves, entrapping both parties in confusion, hurt and fear. Oleanna explores current societal Time Bombs , such as "political correctness" and "sexual harassment" as they explode in lethal consequences for both professor and student. Who is at fault? Firebarn, 340 Prospect St.

Saturday, January 24th

Dollar-a-Bag book sale (Fairhaven) (9:00am-1:00pm)

Huge selection of good books and a large selection of used books sold at reasonable prices-most are 50 cents. Computer and Wifi available to the public. Help with our on-going puzzle, or join in a game of Scrabble. Coffee and desserts available. Church of the Good Shepherd 357 Main St. Fairhaven. Email: andreat120@comcast.net.

Cape and Islands Orchid Show (Barnstable) (9:00am-5:00pm)

26th Annual Cape and Islands Orchid Society Show – “Orchid Bridges” Thousands of beautiful orchids, expert talks, demonstrations, instant win raffle, large vendor area with orchids, supplies and art. Free Parking. The Resort and Conference Center at Hyannis 35 Scudder Ave. Barnstable, Mass. Phone: (866) 828-8259.



Have kids that can't decide which school to attend? Head to the Andrea McCoy Center for the School Choice Fair on Saturday!

4th Annual School Choice Fair (1:00pm-3:00pm)

Do you want to make the most informed decision for your student's K-12 education? More than a dozen schools serving students in New Bedford and surrounding communities will be represented at the 4th Annual School Choice Fair at the beautiful Andrea McCoy Recreation Center. Learn about each school's academic programs, extracurricular activities, parent organizations, etc. at this one-of-a-kind fair. It is free and open to the public. Phone: 508-991-4105. Email: lpoyant@glcps.org. Andrea McCoy Recreation Center 181 Hillman Street New Bedford.

Painting with a Splash: Kids 8+/Family Paint, Kids 12+ (Dragonfly), Blue Waters & Sunset Lake w/ Swan (11:30am,

3:00pm & 7:00pm)

Welcome to Painting with a Splash Where you are the artist! Painting with a Splash is the newest addition to Historic Whaling City Downtown New Bedford. Bringing you an experience of art as entertainment. Add a little wine (BYOB) that will surely tap into your creative side. With step by step instruction and a little music, you and your friends will create the evenings featured painting with a splash of your own uniqueness. NO EXPERIENCE NECESSARY! Just a desire to have fun.

New Bedford Police Association's Family Fun Night (7-8:00 pm)

Family Fun Night at Keith Middle School. Starting comedian Rob Steen, comedian and magician Thomas Hayes and World Reknown Magicians Bonaparte & Franc Karpo. Tickets \$20. Call (774) 225-9433 for information or tickets.

Little theatre: David Mamet's "Oleanna" (Fall River) (7:30pm)

Little theatre presents David Mamet's "Oleanna." David Mamet, one of America's foremost modern playwrights of Glengary Glen Ross fame, crafts this suspenseful and controversial play. A college student drops by her professor's office, allegedly to clarify class notes. During two subsequent meetings, their discussion evolves, entrapping both parties in confusion, hurt and fear. Oleanna explores current societal Time Bombs , such as "political correctness" and "sexual harassment" as they explode in lethal consequences for both professor and student. Who is at fault? Firebarn, 340 Prospect St.

Sunday, January 25th

Cape and Islands Orchid Show (Barnstable) (9:00am-5:00pm)

26th Annual Cape and Islands Orchid Society Show – "Orchid Bridges" Thousands of beautiful orchids, expert talks, demonstrations, instant win raffle, large vendor area with

orchids, supplies and art. Free Parking. The Resort and Conference Center at Hyannis 35 Scudder Ave. Barnstable, Mass. Phone: (866) 828-8259.



Have fun painting "Window Cat" with Blaine at Painting w/ a Splash!

Winter Warmer Concert (1-3:00 pm)

Jazz concert featuring Jim Robitaille of guitar and Bill Miele on bass. Free. Downtown New Bedford Library, 613 Pleasant St.

Painting with a Splash: Odie's Place Fundraiser – Window Cat w/ Blaine (5:00pm)

Welcome to Painting with a Splash Where you are the artist! Painting with a Splash is the newest addition to Historic Whaling City Downtown New Bedford. Bringing you an experience of art as entertainment. Add a little wine (BYOB) that will surely tap into your creative side. With step by step instruction and a little music, you and your friends will create the evenings featured painting with a splash of your own uniqueness. NO EXPERIENCE NECESSARY! Just a desire to have fun.

Want to sponsor this weekend guide? Contact info@newbedfordguide.com for more details.

12 Things to do this Weekend (Jan 16- Jan 18)

Welcome to the world of yo-yo weather. This weekend's weather will be all over "the place," in terms of temperature and precipitation. We'll experience a low of 8 degrees and a high of 47 degrees and we'll range for partly sunny to possible rain. If weatherpersons get the weather this weekend correctly, we'll be donning t-shirts one day and thermals and scarves the next!



As always, click on the title for more or detailed information on the event. Most of the events were pulled from our [event calendar](#) where you can find hundreds of local area events each month. The event calendar is FREE, so if you are a local business, and not taking advantage of FREE publicity, shame on you! Are you a local business and want to sponsor this high traffic, weekend guide? Contact info@newbedfordguide.com for more details. Have an event to add? Check out our [tutorial](#). For more info, you can click on each title. Know of another event this weekend? Post a reply!

Friday, January 16th

Guided stargazing walk (Mattapoisett) (7:00-8:00pm)

Winter skies can often make for clear views of the stars. Take a walk to places with less light pollution allowing you to appreciate the natural beauty of our solar system and beyond. Free, registration required, to RSVP visit www.savebuzzardsbay.org//BayAdventures or email bayadventures@savebuzzardsbay.org. The Bogs 137 Acushnet Rd. Mattapoisett, Mass.



Watch the 1933 classic FREE in the theater of the Corson Maritime Learning Center.

Painting with a Splash: Sunset Tree, Van Gogh 'Starry Night' & Couple under a red umbrella (7:00pm)

Welcome to Painting with a Splash Where you are the artist! Painting with a Splash is the newest addition to Historic Whaling City Downtown New Bedford. Bringing you an experience of art as entertainment. Add a little wine (BYOB) that will surely tap into your creative side. With step by step

instruction and a little music, you and your friends will create the evenings featured painting with a splash of your own uniqueness. NO EXPERIENCE NECESSARY! Just a desire to have fun.

Dock-U-Mentaries FREE movie: 1933 classic "Tugboat Annie" (7:00-8:00pm)

A monthly film series, presented by Working Waterfront Festival and the National Park, will take the third Friday of each month. Films will be shown in the theater of the Corson Maritime Learning Center. Screenings will be drawn from the WWF's sizeable collection of documentary films on all aspects of the working port. Corson Maritime Learning Center.

Saturday, January 17th

Dollar-a-Bag book sale (Fairhaven) (9:00am-1:00pm)

Huge selection of good books and a large selection of used books sold at reasonable prices-most are 50 cents. Computer and Wifi available to the public. Help with our on-going puzzle, or join in a game of Scrabble. Coffee and desserts available. Church of the Good Shepherd 357 Main St. Fairhaven. Email: andreat120@comcast.net.

New Bedford Fitness Challenge (12:00pm-3:00pm)

Join us January 17th for the Kick-off to the New Bedford Fitness Challenge! At this event you can register for the challenge, receive free health screenings, learn about class offerings, and have a great time. For a one-time \$5 fee, you will gain access to twice-weekly fitness classes around New Bedford. Join our supportive community, get healthy, and have a great time! If you cannot make it to the kick-off and registration, you can register for the fitness challenge online. Email: infoPRB@newbedford-ma.gov. Andrea McCoy Recreation Center 181 Hillman Street, New Bedford.

**NASA Astronaut Steve Bowen at Battleship Cove (Fall River)
(1:00pm-3:00pm)**

NASA Astronaut Steve Bowen to visit Battleship Cove. He will be on hand to discuss his missions and sign autographs 1-3 p.m. Event commemorates 50 years since the USS Joseph P. Kennedy, Jr. was involved in the Gemini space capsule recovery program. \$5 funshops for kids. Open 9 a.m.-5 p.m. daily, \$17 \$15 seniors, veterans and AAA members, \$10.50 children 6-12, free for children under 6 and active military personnel in uniform. Battleship Cove features the world's largest collection of historic naval ships.

Dave Mason's Traffic Jam at the "Z" (8:00pm)

Dave Mason is a living rock legend! Join the Rock and Roll Hall of Famer, backed by a full band, as he performs hits such as "Dear Mr. Fantasy" and "Feelin' Alright," while relating behind-the-scenes insights on the band's heyday – a must see retrospective of his band, Traffic! TICKETS

**Painting with a Splash: Moon Rise, Quiet Time, Orange Sky
light house & Couple's Night Special (3:00 (Moon Rise) &
7:00pm)**

Welcome to Painting with a Splash Where you are the artist! Painting with a Splash is the newest addition to Historic Whaling City Downtown New Bedford. Bringing you an experience of art as entertainment. Add a little wine (BYOB) that will surely tap into your creative side. With step by step instruction and a little music, you and your friends will create the evenings featured painting with a splash of your own uniqueness. NO EXPERIENCE NECESSARY! Just a desire to have fun.

**Your Theatre, Inc.: "Italian American Reconciliation" (8:00
pm)**

The play follows Huey Maximilian Bonfigliano, who has a problem: While he is safely divorced from his shrewish first wife, Janice, who shot his dog and even took a bead on him, he

feels he cannot regain his “manhood” until he woos and wins her one more time. He enlists the aid of his lifelong buddy, Aldo Scalicki, a confirmed bachelor who tries, without apparent success, to convince Huey that he would be better off sticking with his new lady friend, Teresa, a usually placid young waitress whose indignation flares when she learns what Huey is up to. In a moonlit balcony scene (hilariously reminiscent of Cyrano de Bergerac) Aldo pleads his lovesick friend’s case and, to his astonishment, Janice capitulates. Finally, he learns “the greatest – and only – success is to be able to love”. For information or tickets email info@yourtheatre.org or call (508) 993-0772.

Sunday, January 18th

Sister Act at the “Z” (2:00pm)

Direct from Broadway, Sister Act is the musical comedy smash that the New York Post calls “RIDICULOUSLY FUN” Featuring music by Tony® and Oscar® winner Alan Menken (Newsies, Beauty and the Beast), Sister Act tells the story of Deloris, a wannabe diva whose life takes a surprising turn when she witnesses a crime and the cops hide her in the last place anyone would think to look—a convent! Infectious song and joyous dance are the hallmarks of this feel-good production, guaranteed to get you singing hymns of praise! Tickets: <https://ticketing.zeiterion.org/public/Default.asp>



*Have fun
painting
"Sunflower" with
Blaine at
Painting w/ a
Splash!*

Painting with a Splash: Sunflower w/ Blaine (2:00pm)

Welcome to Painting with a Splash Where you are the artist! Painting with a Splash is the newest addition to Historic Whaling City Downtown New Bedford. Bringing you an experience of art as entertainment. Add a little wine (BYOB) that will surely tap into your creative side. With step by step instruction and a little music, you and your friends will create the evenings featured painting with a splash of your own uniqueness. NO EXPERIENCE NECESSARY! Just a desire to have fun.

Your Theatre, Inc.: "Italian American Reconciliation" (2:30 pm)

The play follows Huey Maximilian Bonfigliano, who has a problem: While he is safely divorced from his shrewish first wife, Janice, who shot his dog and even took a bead on him, he feels he cannot regain his "manhood" until he woos and wins her one more time. He enlists the aid of his lifelong buddy, Aldo Scalicki, a confirmed bachelor who tries, without apparent success, to convince Huey that he would be better off sticking with his new lady friend, Teresa, a usually placid young waitress whose indignation flares when she learns what

Huey is up to. In a moonlit balcony scene (hilariously reminiscent of Cyrano de Bergerac) Aldo pleads his lovesick friend's case and, to his astonishment, Janice capitulates. Finally, he learns "the greatest – and only – success is to be able to love". For information or tickets email info@yourtheatre.org or call (508) 993-0772.

Want to sponsor this weekend guide? Contact info@newbedfordguide.com for more details.

10 Things to do this Weekend (Jan 09- Jan 11)

Compared to the seriously frigid temperatures on Thursday, we are in for a "balmy" and "pleasant" weekend. Overnight temperatures will be pretty cold, hovering around 15 degrees and reminding us of Thursday. We will get some snow showers on Friday, but it shouldn't amount to much. Saturday will be the coldest day with a high of 24 degrees. Brrrr. At least Saturday will have plenty of sunshine!



As always, click on the title for more or detailed information on the event. Most of the events were pulled from our [event calendar](#) where you can find hundreds of local area events each month. The event calendar is FREE, so if you are a local business, and not taking advantage of FREE publicity, shame on you! Are you a local business and want to sponsor this high traffic, weekend guide? Contact info@newbedfordguide.com for more details. Have an event to add? Check out our [tutorial](#). For more info, you can click on each title. Know of another event this weekend? Post a reply!

Friday, January 9th

The Compassionate Friends support group (Dartmouth) (6:30pm)

The mission of The Compassionate Friends: When a child dies, at any age, the family suffers intense pain and may feel hopeless and isolated. The Compassionate Friends provides highly personal comfort, hope, and support to every family experiencing the death of a son or a daughter, a brother or a sister, or a grandchild, and helps others better assist the grieving family. 2nd Friday of each month. For additional information please contact Anne at 508-333-9096 or Gina at 508-287-1780 or click on event title. Smith Mills Christian Congregational Church 11 Anderson Way North Dartmouth.

Painting with a Splash: Snow Trees w/ Blaine (7:00pm)

Welcome to Painting with a Splash Where you are the artist! Painting with a Splash is the newest addition to Historic Whaling City Downtown New Bedford. Bringing you an experience of art as entertainment. Add a little wine (BYOB) that will surely tap into your creative side. With step by step instruction and a little music, you and your friends will create the evenings featured painting with a splash of your own uniqueness. NO EXPERIENCE NECESSARY! Just a desire to have fun.

Saturday, January 10th

Oxford Book Haven & Cafe (Fairhaven) (9:00-1:00pm)

Large selection of used books sold at reasonable prices-most are 50 cents. Computer and Wifi available to the public. Help with our on-going puzzle, or join in a game of Scrabble. Coffee and desserts available. Church of the Good Shepherd 357 Main St. Fairhaven.

Ice Harvest History (FREE) (10:00am)

If you've ever headed north on Rte. 24 in Fall River and looked east across North Watuppa Pond you might have noticed the overgrown 40 foot high granite walls along the shoreline and wondered what they were. Here's your chance to find out! Before modern refrigeration there was only one way to keep things cold: ice.



*Have fun
painting "Wine
Pour" with Fitz
at Painting w/ a
Splash!*

During the winter, ice was cut from many local ponds and stored in ice houses throughout the year. Come learn more about the fascinating history of ice harvesting and visit

what's left of the Crystal Ice Company on Interlachen Island, an area not normally open to the public.

Meet at 10AM at Bristol Community College, Elsbree St., Fall River, Rm. H210. There will be a lecture and then a tour of the ice house on Interlachen immediately following. Phone: 508.636.4693 x103, Email: kheard@ttor.org.

The Art of Dialogue (Westport) (5:00-6:00pm)

Hosted by the Dedee Shattuck Gallery. Tom Peters will present "What's Up Doc? Work circa 2025." A robot performs bypass surgery with more accuracy and less complications than a doc, a Chinese manufacturer puts in an order for 1,000,000 robots to be delivered in the next three years (and their manufacturing employment plummets), an algorithm is a legal member of a venture capital firm's Board of Directors (and is outperforming its humanoid peers), iDiscovery software knocks lawyers by the busload out of work, your car knows you're having a heart attack before you do and calls an ambulance, and a New Yorker writer goes to taskrabbit to outsource comments on Proust for her forthcoming book group (best, and in fact brilliant, result courtesy a 14-year-old girl from New Jersey).

Read

more:

<http://www.artofdialogue.com/2015-programs/#/whats-up-doc-work-circa-2025/>

Painting with a Splash: Cat on a Fence w/ Ann & Sparkle City w/ Blaine (7:00pm)

Welcome to Painting with a Splash Where you are the artist! Painting with a Splash is the newest addition to Historic Whaling City Downtown New Bedford. Bringing you an experience of art as entertainment. Add a little wine (BYOB) that will surely tap into your creative side. With step by step instruction and a little music, you and your friends will create the evenings featured painting with a splash of your own uniqueness. NO EXPERIENCE NECESSARY! Just a desire to have fun.

Sunday, January 11th

Meet Your Local Farmer (Westport) (1:00pm-3:00 pm)

Sponsored by the Westport Agricultural Commission, Westport Land Conservation Trust and Westport Grange. Products will be sold by a number of local groups and farmers. Event is free and open to the public. Westport Grange, 931 Main Road.

Spirit of Grace service for autistic and special needs children (2:00pm-3:00pm)

All participants must be accompanied by a parent or caretaker. Reservations are needed. Please call Andrea at 508-991-8596, Rev. Rebecca Blair at 508-992-9274, or Beryl at 508-493-4408. Email: andreat120@comcast.net. St. Peter's Church, Judith Clarke Center 351 Elm St Dartmouth.

The Wellington International Ukulele Orchestra at the "Z" (2:00pm)

The popular New Zealand ensemble creates magic, with high-octane solos, heavenly harmonies and outrageous costumes. Impeccable music skills, and a canny choice of covers, have audiences rolling in the aisles with their on-stage antics. Stunning solos are juxtaposed against comically budget lighting effects and questionable banter. The song choices themselves only serve to highlight the musical excellence and comic brilliance of the group. Tickets: <https://ticketing.zeiterion.org/public/Default.asp>

Painting with a Splash: Wine Pour w/ Fitz (6:00pm)

Welcome to Painting with a Splash Where you are the artist! Painting with a Splash is the newest addition to Historic Whaling City Downtown New Bedford. Bringing you an experience of art as entertainment. Add a little wine (BYOB) that will surely tap into your creative side. With step by step instruction and a little music, you and your friends will

create the evenings featured painting with a splash of your own uniqueness. NO EXPERIENCE NECESSARY! Just a desire to have fun.

Want to sponsor this weekend guide? Contact info@newbedfordguide.com for more details.

8 Things to do this Weekend (Jan 02- Jan 04)

This weekend will be a yo-yo sort of one in terms of weather. We'll experience a low of 20 degrees and a high of 56 degrees. Only in New England! We'll start out OK in terms of sunshine, but each day will get progressively worse. By Sunday we'll have periods of rain. However, on the bright side of things it'll be 56 degrees!



As always, click on the title for more or detailed information on the event. Most of the events were pulled from our [event calendar](#) where you can find hundreds of local area events each

month. The event calendar is FREE, so if you are a local business, and not taking advantage of FREE publicity, shame on you! Are you a local business and want to sponsor this high traffic, weekend guide? Contact info@newbedfordguide.com for more details. Have an event to add? Check out our **tutorial**. For more info, you can click on each title. Know of another event this weekend? Post a reply!

Friday, January 2nd

Painting with a Splash: Blue Waters & Sunset Beach (7:00pm)

Welcome to Painting with a Splash Where you are the artist! Painting with a Splash is the newest addition to Historic Whaling City Downtown New Bedford. Bringing you an experience of art as entertainment. Add a little wine (BYOB) that will surely tap into your creative side. With step by step instruction and a little music, you and your friends will create the evenings featured painting with a splash of your own uniqueness. NO EXPERIENCE NECESSARY! Just a desire to have fun.

Saturday, January 3rd

Stories in the Snow

Each Saturday in January and February, you can take a storybook walk with your family at a local conservation areas. The Coalition and the Wareham Land Trust will set up a new story each weekend that embraces the beauty of winter. Visit one of these places anytime between dawn and dusk to go on a self-guided family adventure. FREE. Registration is required for all Bay Adventures. To RSVP: Phone-(508) 999-6363 ext. 219 or Email: bayadventures@savebuzzardsbay.org.



*Have fun painting
"Cat on a Fence"
at Painting w/ A
Splash!*

Boston One-Minute Play Festival (8::00pm)

The One-Minute Play Festival is a barometer project, which investigates the zeitgeist of different communities through dialogue and consensus building sessions and a performance of many moments. #1MPF works in partnership with theatres sharing playwright or community-specific missions across the country. The work attempts to reflect the theatrical landscape of local artistic communities by creating a dialogue between the collective conscious and the individual voice. For more information click on thread title. Playwrights Theatre, 949 Commonwealth Ave.

Painting with a Splash: Cat on the Fence & Date Night (3:00pm & 7:00pm)

Welcome to Painting with a Splash Where you are the artist! Painting with a Splash is the newest addition to Historic Whaling City Downtown New Bedford. Bringing you an experience of art as entertainment. Add a little wine (BYOB) that will surely tap into your creative side. With step by step instruction and a little music, you and your friends will create the evenings featured painting with a splash of your

own uniqueness. NO EXPERIENCE NECESSARY! Just a desire to have fun.

Winter owl prowl (Middleboro) (4:00-6:00pm)

Soule Homestead is a 501(c)(3) Educational non-profit organization. Our primary focus is teaching children about the "Web of Life." We are open, free to the public, 9AM to 5PM Tuesday through Sunday. Phone: 508-947-6744. Email: info@soulehomestead.org. Venue website: Soule Homestead Education Center, 46 Soule Street, Middleboro.

Sunday, January 4th

Fete des Rois Celebration (Acushnet) (11:15am)

Serving Tourtières, Soupe aux Pois (Pea Soup), cretons, meat pie or baked chicken. Music by The Fleur de Lis Band. Many people to bring their personally decorated Gigueux (limberjacks) and spoons. There is always a great amount of Audience participation during this event. Tickets \$30, children 12 and under \$17. Tickets sold only advance, contact Ray Patenaude (508) 995-3792. Century House, 107 South Main St.



The One Minute Play Festival takes place on Saturday and Sunday!

Painting with a Splash: Winter Trees (2:00pm)

Welcome to Painting with a Splash Where you are the artist! Painting with a Splash is the newest addition to Historic Whaling City Downtown New Bedford. Bringing you an experience of art as entertainment. Add a little wine (BYOB) that will surely tap into your creative side. With step by step instruction and a little music, you and your friends will create the evenings featured painting with a splash of your own uniqueness. NO EXPERIENCE NECESSARY! Just a desire to have fun.

Boston One-Minute Play Festival (8::00pm)

The One-Minute Play Festival is a barometer project, which investigates the zeitgeist of different communities through dialogue and consensus building sessions and a performance of many moments. #1MPF works in partnership with theatres sharing playwright or community-specific missions across the country. The work attempts to reflect the theatrical landscape of local artistic communities by creating a dialogue between the collective conscious and the individual voice. For more information click on thread title. Playwrights Theatre, 949 Commonwealth Ave.

Want to sponsor this weekend guide? Contact info@newbedfordguide.com for more details.

20 Things to do this Weekend

(Dec 19- Dec 21)



Head to Buttonwood Park Zoo this Saturday and Sunday!

We have a relatively pleasant weekend in store for us. Friday and Saturday we will may only reach a high of 40 degrees, but it will be generally sunny. Sunday will be warmer than the first two days, but rain and drizzle is possible. That will hardly slow us down! With Christmas fast approaching, people are in festive moods and looking to unwind with the time they have off from work!



As always, click on the title for more or detailed information on the event. Most of the events were pulled from our [event calendar](#) where you can find hundreds of local area events each month. The event calendar is FREE, so if you are a local business, and not taking advantage of FREE publicity, shame on you! Are you a local business and want to sponsor this high traffic, weekend guide? Contact info@newbedfordguide.com for more details. Have an event to add? Check out our [tutorial](#).

For more info, you can click on each title. Know of another event this weekend? Post a reply!

Friday, December 19th

Edaville: XMas Festival of Lights (2:00pm-9:00pm)

Edaville's Christmas Festival of Lights is arguably the most-loved festival of its kind, having earned generations of loyal fans. Passengers relax comfortably in warm and dry coaches while riding through a spectacular holiday setting featuring an explosion of lights. Kids of all ages will enjoy an array of vintage amusement rides and a visit with Santa in one of our indoor play areas. Stay for a delicious full meal or enjoy seasonal treats while roaming our sprawling and beautifully decorated grounds featuring thousands of Christmas displays. For more info and/or tickets, click on event title.

Partridge and a Pear Tree at Allen C. Haskell Public Gardens (5:00pm-6:00pm)

Dating back to the late 1700s, "The Twelve Days of Christmas," written by Frederick Austin, is a carol that enumerates the increasingly grand gifts given on each of the twelve days of Christmas. The Partridge and a Pear Tree was the first gift of this classic holiday song.



*Spread the cheer
and brighten up to
community!!*

Please join the Trustees of Reservations as we celebrate the holiday in honor of the late Allen C. Haskell, who would light the pear tree located along side the historic Hathaway home with his friends and family. Phone: 774-923-7796. Email: ACHaskell@ttor.org. Friday, December 19, 2014, 5:00 PM – 6:00 PM. Allen C. Haskell Public Gardens, 787 Shawmut Avenue New Bedford, Mass.

Mindful Moms' Christmas caroling in the west end (6:00pm)

The group will meet at the southeast corner (Rockdale Ave. and Hawthorn St.) of Buttonwood Park. Lyrics, candles, and cookies will be provided. All are welcome. MIMO organizer, Cynthia Roy (30 of New Bedford) is ecstatic about the event. "I can't wait to see everyone's face as we dance and sing down Hawthorn Street for the second year!" Last year's caroling event was a huge success. "We were greeted with so much love and joy. One lady told us we made her week, as she had been feeling under the weather." Read more: <http://www.newbedfordguide.com/mimo-christmas-caroling-west-end/2014/12/02>.

Rockdale Ave Neighborhood Association Christmas tree lighting (6:30pm)

The Rockdale Ave Neighborhood Association Christmas tree lighting celebration at Harrington Park in the west end of #NewBedford is this evening at 6:30pm. Santa will also arriving at 6:45pm to indulge in some hot cocoa and cookies with the children and parents. Full details: <http://www.newbedfordguide.com/rockdale-christmas-tree-lighting/2014/12/19>

Painting with a Splash: Van Gogh Field and Winter Lighthouse (7:00pm)

Welcome to Painting with a Splash Where you are the artist!

Painting with a Splash is the newest addition to Historic Whaling City Downtown New Bedford. Bringing you an experience of art as entertainment. Add a little wine (BYOB) that will surely tap into your creative side. With step by step instruction and a little music, you and your friends will create the evenings featured painting with a splash of your own uniqueness. NO EXPERIENCE NECESSARY! Just a desire to have fun.

Dock-U-Mentary: In the Path of Storms (FREE movie) (7:00pm)

A monthly film series, presented by Working Waterfront Festival and the National Park, will take the third Friday of each month. Films will be shown in the theater of the Corson Maritime Learning Center. Screenings will be drawn from the WWF's sizeable collection of documentary films on all aspects of the working port.

Saturday, December 20th

XMas Trees!!! Silverbrook ACUSHNET Country Store – Holiday pies, cakes and cookies (9:00am-4:00pm)

Get your fresh cut XMas tree today! Thinking of the holidays and don't want to bake? Let the Pereira Bread Co. (a tasty little division of Silverbrook Farm) do the baking for you by ordering one of our famous pies, cakes and cookies. Silverbrook Country Store also has a wonderful and unique line of crafts including their popular candle/potpourri items and a great selection of handmade Amish items that truly make great gifts for any occasion.



It's that time of year!

It's Beginning to Look A Lot Like Christmas at the Newport Mansions (10:00am-5:00 pm)

The glitter of gold and the sparkle of silver will dazzle you as you tour three magnificent mansions decked out in Yuletide finery. Music, tours, and spectacular decorations highlight the celebration of Christmas at the Newport Mansions. For more information, click on event title.

3rd Annual Holiday Zubilee at Buttonwood Park Zoo (11:00am-4:00pm)

Experience the holidays in a unique way at the Buttonwood Park Zoo's third annual Holiday Zoobilee. Visitors will be able to learn how the zoo's animals stay active through holiday themed keeper chats and animal enrichments. There will be opportunities to decorate a special holiday cookie, deliver your holiday wish list to Santa, and meet Queen Elsa and Princess Anna too! Explore the Zoo in search of our 12 Bears on the Branch hidden throughout the zoo. Both the train and wildlife carousel are included in the Holiday Zoobilee admission price.

Edaville: XMas Festival of Lights (2:00pm-9:00pm)

Edaville's Christmas Festival of Lights is arguably the most-loved festival of its kind, having earned generations of loyal fans. Passengers relax comfortably in warm and dry coaches while riding through a spectacular holiday setting featuring an explosion of lights. Kids of all ages will enjoy an array of vintage amusement rides and a visit with Santa in one of our indoor play areas. Stay for a delicious full meal or enjoy seasonal treats while roaming our sprawling and beautifully decorated grounds featuring thousands of Christmas displays. For more info and/or tickets, click on event title.



Don't miss out on the NBSO's Magical Moment program at the Z on Saturday! (3:30 & 7:00)

NBSO Family Holiday Pops 2014: Magical Moments (3:30pm & 7:00pm)

The NBSO's Family Holiday Pops Concerts are bursting with magical moments! With holiday music we all love played by a great orchestra, friends and family sharing the joy of the season, and festive holiday decorations, it's no wonder this concert is a South Coast holiday tradition! The children's matinee at 3:30 will feature a fun, interactive activity while the 7:00 performance offers a few more carols for a slightly longer concert experience; each child attending either concert receives a gift. Featured performers include soprano Patrice Tiedemann, the New Bedford Symphony Youth Orchestra and the Showstoppers performing arts troupe. Tickets: <https://ticketing.zeiterion.org/public/Default.asp>

Dedee Shattuck Gallery Masquerade Ball (Westport) (7:00-10:00pm)

Live music, mask making, photo booth, open bar and more.

Painting with a Splash: Santa (12+), Window Wreath, Snowglobe, & Window Cat (12:00pm, 3:00pm, 7:00pm & 7:00pm)

Welcome to Painting with a Splash Where you are the artist! Painting with a Splash is the newest addition to Historic Whaling City Downtown New Bedford. Bringing you an experience of art as entertainment. Add a little wine (BYOB) that will surely tap into your creative side. With step by step

instruction and a little music, you and your friends will create the evenings featured painting with a splash of your own uniqueness. NO EXPERIENCE NECESSARY! Just a desire to have fun.

Aine Minogue's 20th annual Winter Solstice concert (Portsmouth) (7:00pm)

A night of intriguing harp music, ethereal vocals, winter tales, and tales told out of school by one of the world's most talented harpists. For some in the Common Fence Music audience, this is a yearly outing. Common Fence Music: Presents all-Ireland Harpist Aine Minogue's 20th annual Winter Solstice concert. Phone: (401) 683-5085 for tickets. Common Fence Music, 933 Anthony Road.

Sunday, December 21st

XMas Trees!!! Silverbrook ACUSHNET Country Store – Holiday pies, cakes and cookies (9:00am-4:00pm)

Get your fresh cut XMas tree today! Thinking of the holidays and don't want to bake? Let the Pereira Bread Co. (a tasty little division of Silverbrook Farm) do the baking for you by ordering one of our famous pies, cakes and cookies. Silverbrook Country Store also has a wonderful and unique line of crafts including their popular candle/potpourri items and a great selection of handmade Amish items that truly make great gifts for any occasion.

It's Beginning to Look A Lot Like Christmas at the Newport Mansions (10:00am-5:00 pm)

The glitter of gold and the sparkle of silver will dazzle you as you tour three magnificent mansions decked out in Yuletide finery. Music, tours, and spectacular decorations highlight the celebration of Christmas at the Newport Mansions. For more information, click on event title.



*Have fun
painting
"Snowglobe" at
Painting w/ a
Splash!*

**3rd Annual Holiday Zubilee at Buttonwood Park Zoo
(11:00am-4:00pm)**

Experience the holidays in a unique way at the Buttonwood Park Zoo's third annual Holiday Zoobilee. Visitors will be able to learn how the zoo's animals stay active through holiday themed keeper chats and animal enrichments. There will be opportunities to decorate a special holiday cookie, deliver your holiday wish list to Santa, and meet Queen Elsa and Princess Anna too! Explore the Zoo in search of our 12 Bears on the Branch hidden throughout the zoo. Both the train and wildlife carousel are included in the Holiday Zoobilee admission price.

**Edaville: XMas Festival of Lights & Polar Express Train Ride
(2:00pm-9:00pm)**

Edaville's Christmas Festival of Lights is arguably the most-loved festival of its kind, having earned generations of loyal fans. Passengers relax comfortably in warm and dry coaches while riding through a spectacular holiday setting featuring an explosion of lights. Kids of all ages will enjoy an array of vintage amusement rides and a visit with Santa in one of our indoor play areas. Stay for a delicious full meal or enjoy seasonal treats while roaming our sprawling and beautifully

decorated grounds featuring thousands of Christmas displays.

Polar Express is inspired by the run-away hit movie! This holiday favorite comes to life as you and your family take a ride on THE POLAR EXPRESS™ Train Ride. Set to the sounds of the motion picture soundtrack, families are sure to enjoy their trip to the North Pole, complete with hot chocolate and cookies served on board the train. Passengers will then be entertained by a reading of THE POLAR EXPRESS. Upon arrival at the North Pole, Santa will greet the children and each child will receive their own sleigh bell, just like in the movie, to those who BELIEVE.



*Polar Express Ride and
XMas Festival of
Lights at Edaville
USA!*

Painting with a Splash: Holiday Martinis (6:00pm)

Welcome to Painting with a Splash Where you are the artist! Painting with a Splash is the newest addition to Historic Whaling City Downtown New Bedford. Bringing you an experience of art as entertainment. Add a little wine (BYOB) that will surely tap into your creative side. With step by step instruction and a little music, you and your friends will create the evenings featured painting with a splash of your own uniqueness. NO EXPERIENCE NECESSARY! Just a desire to have fun.

Blue Christmas/ The Longest Night Service (Fall River) (6:30-7:00pm)

Is all the festivity and cheer of Christmas a little too much for you? Is Christmas going to be different for you this year or has it always been different for you? Are the days leading up to Christmas sad, frustrating, lonely? Here's an opportunity to experience hope and light in these days. You are invited to our Blue Christmas/ The Longest Night Service. Phone: 508-676-3091. Email: unionunmc@verizon.net. Union United Methodist Church, 600 Highland Ave, Fall River.

Want to sponsor this weekend guide? Contact info@newbedfordguide.com for more details.

24 Things to do this Weekend (Dec 12- Dec 14)



Head to Buttonwood Park Zoo this Saturday and Sunday!

This weekend is made up of pretty mild temperatures. While we will experience lows below freezing, each day will warm up into the 40s. If you're a fan of wearing thermals, hoodies, or flannels, you will be thrilled. However, Saturday will

experience something that only happens on few corners of the world – contradictory weather in the same day: “Periods of sun, with a snow shower.” No one in New England would balk at this of course. Rain, sleet, snow and sunny? Yeah, we call that “Tuesday.” Otherwise, the weekend will mixed clouds and sun – with no precipitation forecasted for Friday or Sunday.



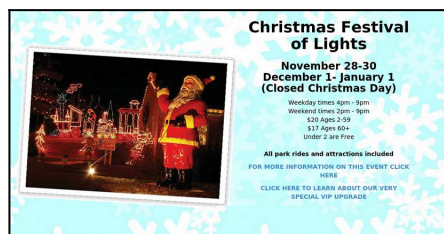
As always, click on the title for more or detailed information on the event. Most of the events were pulled from our [event calendar](#) where you can find hundreds of local area events each month. The event calendar is FREE, so if you are a local business, and not taking advantage of FREE publicity, shame on you! Are you a local business and want to sponsor this high traffic, weekend guide? Contact info@newbedfordguide.com for more details. Have an event to add? Check out our [tutorial](#). For more info, you can click on each title. Know of another event this weekend? Post a reply!

Friday, December 12th

Edaville: XMas Festival of Lights (2:00pm-9:00pm)

Edaville’s Christmas Festival of Lights is arguably the most-loved festival of its kind, having earned generations of loyal fans. Passengers relax comfortably in warm and dry coaches while riding through a spectacular holiday setting featuring an explosion of lights. Kids of all ages will enjoy an array

of vintage amusement rides and a visit with Santa in one of our indoor play areas. Stay for a delicious full meal or enjoy seasonal treats while roaming our sprawling and beautifully decorated grounds featuring thousands of Christmas displays. For more info and/or tickets, click on event title.



It's that time of year!

Sparkle! An outdoor family event! (Bristol, R.I.) (6:00pm-8:00pm)

Festive fun for the entire family! Come, stroll through Blithewold's illuminated gardens and Greenhouse, breathe in that crisp Christmas air, or join our carolers as they spread holiday cheer. Come, enjoy music, cocoa, and roasted marshmallows around a roaring bonfire in Blithewold's Enclosed Garden. Carol singing begins at 6:30 p.m. around the bonfire. Hot Cocoa is free; S'mores kits will be available for \$1. Blithewold Mansion, Gardens & Arboretum, 101 Ferry Road Bristol, RI 02809. Phone: 401.253.2707. Email: amillora@blithewold.org.

Painting with a Splash: Reindeer Fun, Starry Night, & Northern Lights (7:00pm)

Welcome to Painting with a Splash Where you are the artist! Painting with a Splash is the newest addition to Historic Whaling City Downtown New Bedford. Bringing you an experience of art as entertainment. Add a little wine (BYOB) that will surely tap into your creative side. With step by step instruction and a little music, you and your friends will create the evenings featured painting with a splash of your own uniqueness. NO EXPERIENCE NECESSARY! Just a desire to have

fun.

Saturday, December 13th

XMas Trees!!! Silverbrook ACUSHNET Country Store – Holiday pies, cakes and cookies (9:00am-4:00pm)

Get your fresh cut XMas tree today! Thinking of the holidays and don't want to bake? Let the Pereira Bread Co. (a tasty little division of Silverbrook Farm) do the baking for you by ordering one of our famous pies, cakes and cookies. Silverbrook Country Store also has a wonderful and unique line of crafts including their popular candle/potpourri items and a great selection of handmade Amish items that truly make great gifts for any occasion.



Save a boatload of money while getting your Christmas shopping done!

It's Beginning to Look A Lot Like Christmas at the Newport Mansions (10:00am-5:00 pm)

The glitter of gold and the sparkle of silver will dazzle you as you tour three magnificent mansions decked out in Yuletide finery. Music, tours, and spectacular decorations highlight the celebration of Christmas at the Newport Mansions. For more information, click on event title.

3rd Annual Holiday Zubilee at Buttonwood Park Zoo (11:00am-4:00pm)

Experience the holidays in a unique way at the Buttonwood Park Zoo's third annual Holiday Zoobilee. Visitors will be able to learn how the zoo's animals stay active through holiday themed keeper chats and animal enrichments. There will be opportunities to decorate a special holiday cookie, deliver your holiday wish list to Santa, and meet Queen Elsa and Princess Anna too! Explore the Zoo in search of our 12 Bears on the Branch hidden throughout the zoo. Both the train and wildlife carousel are included in the Holiday Zoobilee admission price.

Explorer Zone Day at Buttonwood Park Zoo: Solar System (1:00pm-3:00pm)

Ocean Explorium Explorer Zone Days here at the Zoo. Join us to learn a little more about the critters that call the ocean home!

Cookie decorating (Mattapoissett) (1:00-3:00pm)

Come to the Mattapoissett Library as part of the Mattapoissett Holiday Stroll – listen to some holiday stories and decorate a cookie to take home!

Creative Auctions Holiday Auction (1pm – close)

Looking for some deep discounted NEW items? Creative Auctions is hosting their annual Holiday Auction. Doors open at 1pm and auctions start at 2pm at the Bank Street Armory on 72 Bank Street in Fall River. Get here early because we had a standing room only crowd this past Saturday! Preview of items to expect:

Edaville: XMas Festival of Lights (2:00pm-9:00pm)

Edaville's Christmas Festival of Lights is arguably the most-loved festival of its kind, having earned generations of loyal fans. Passengers relax comfortably in warm and dry coaches

while riding through a spectacular holiday setting featuring an explosion of lights. Kids of all ages will enjoy an array of vintage amusement rides and a visit with Santa in one of our indoor play areas. Stay for a delicious full meal or enjoy seasonal treats while roaming our sprawling and beautifully decorated grounds featuring thousands of Christmas displays. For more info and/or tickets, click on event title.



Parents, take a break or do some Christmas shopping while the kids have fun!

23rd Annual Holiday House Tour (4:00pm-7:00 pm)

Enjoy historic homes decorated for the holidays, costumed portrayals, spot the Peppermint Pig Scavenger Hunt, holiday raffle.

427 County St., New Bedford. Reservations recommended but not required. Call the Wamsutta Club directly at 508.997.7431 to make your reservation. Details: <http://www.newbedfordguide.com/preservation-society-holiday-house-tour/2014/11/0>

Parent's Night Out (4:00-7:00pm)

With the holidays around the corner, "Parents Night Out," gives parents the opportunity to drop their children off in a fun and safe environment while they run their errands. Fun fitness games, movies, and a pizza party are a few of the ways we will kick off the evening. Parents must register their children no later than December 12th. Ages 6-13. \$5. Payment is due at the time of registration. Check or money order

payable to "City of New Bedford." Andrea McCoy Recreation Center, 181 Hillman Street, N.B. 508.991.6298.

Painting with a Splash: Mr. Snowman(8+), The Eye (Advanced) & three other XMas themes (12:30pm, 3:00pm, 7:00pm)

Welcome to Painting with a Splash Where you are the artist! Painting with a Splash is the newest addition to Historic Whaling City Downtown New Bedford. Bringing you an experience of art as entertainment. Add a little wine (BYOB) that will surely tap into your creative side. With step by step instruction and a little music, you and your friends will create the evenings featured painting with a splash of your own uniqueness. NO EXPERIENCE NECESSARY! Just a desire to have fun.

Bullard Street Neighborhood Association Tree Lighting (7:00 pm)

The Bullard Street Neighborhood Association at Riverside Park on corner of Belleville Avenue and Tallman Avenue. Santa Claus is coming to town with Mrs. Claus for this special occasion to visit with all of the girls and boys.

Sunday, December 14th

New Bedford 5k Santa Run (11am)

The 4th Annual New Bedford 5K Santa run is expected to host 1,000 Santas running through downtown New Bedford. Still want to sign up? Head over to the YMCA downtown starting at 9:30am to race time. The 5K kicks off at 11am. Details: <http://www.thesightings.com/event/santa-sightings/>

XMas Trees!!! Silverbrook ACUSHNET Country Store – Holiday pies, cakes and cookies (9:00am-4:00pm)

Get your fresh cut XMas tree today! Thinking of the holidays and don't want to bake? Let the Pereira Bread Co. (a tasty little division of Silverbrook Farm) do the baking for you by

ordering one of our famous pies, cakes and cookies. Silverbrook Country Store also has a wonderful and unique line of crafts including their popular candle/potpourri items and a great selection of handmade Amish items that truly make great gifts for any occasion.

It's Beginning to Look A Lot Like Christmas at the Newport Mansions (10:00am-5:00 pm)

The glitter of gold and the sparkle of silver will dazzle you as you tour three magnificent mansions decked out in Yuletide finery. Music, tours, and spectacular decorations highlight the celebration of Christmas at the Newport Mansions. For more information, click on event title.

Santa Sightings 5K Race (11:00am)

To benefit the New Bedford Cultural Commision, Gifts to give of New Bedford and the Southcoast YMCA. New to this year, Youth Runs for 6 and under and 7-12. Registration takes place 5-8 p.m. Dec. 13 and 7 a.m. Dec. 14. \$35, \$10 for youth racers. For information visit www.the-sightings/events/santa-sightings. Race starts and finishes at New Bedford City Hall, New Bedford.



Have fun painting "XMass Candle" at Painting w/ a Splash!

3rd Annual Holiday Zubilee at Buttonwood Park Zoo (11:00am-4:00pm)

Experience the holidays in a unique way at the Buttonwood Park Zoo's third annual Holiday Zoobilee. Visitors will be able to learn how the zoo's animals stay active through holiday themed keeper chats and animal enrichments. There will be opportunities to decorate a special holiday cookie, deliver your holiday wish list to Santa, and meet Queen Elsa and Princess Anna too! Explore the Zoo in search of our 12 Bears on the Branch hidden throughout the zoo. Both the train and wildlife carousel are included in the Holiday Zoobilee admission price.

23rd Annual Holiday House Tour (1:00pm-5:00 pm)

Enjoy historic homes decorated for the holidays, costumed portrayers, spot the Peppermint Pig Scavenger Hunt, holiday raffle.

427 County St., New Bedford. Reservations recommended but not required. Call the Wamsutta Club directly at 508.997.7431 to make your reservation. An elegant pre-tour brunch at the Wamsutta Club will be from 11 a.m. to 1 p.m., along with a holiday raffle of beautiful gifts, art, antiques and handcrafted items. \$19 advance purchase, \$23 at the door. All proceeds benefit the society. Details: <http://www.newbedfordguide.com/preservation-society-holiday-house-tour/2014/11/0>

New England Irish Harp Orchestra (2:00pm)

Mark your calendars for a holiday performance in the beautiful upstairs reading rooms by the New England Irish Harp Orchestra at the Mattapoissett Library. This exciting and educational presentation, sponsored by the Library Trust, will be preceded by the Annual Meeting of the Friends of the Mattapoissett Library downstairs in the community meeting room at 1:00 p.m.

Edaville: XMas Festival of Lights & Polar Express Train Ride (2:00pm-9:00pm)

Edaville's Christmas Festival of Lights is arguably the most-

loved festival of its kind, having earned generations of loyal fans. Passengers relax comfortably in warm and dry coaches while riding through a spectacular holiday setting featuring an explosion of lights. Kids of all ages will enjoy an array of vintage amusement rides and a visit with Santa in one of our indoor play areas. Stay for a delicious full meal or enjoy seasonal treats while roaming our sprawling and beautifully decorated grounds featuring thousands of Christmas displays.



*Polar Express Ride and
XMas Festival of
Lights at Edaville
USA!*

Polar Express is inspired by the run-away hit movie! This holiday favorite comes to life as you and your family take a ride on THE POLAR EXPRESS™ Train Ride. Set to the sounds of the motion picture soundtrack, families are sure to enjoy their trip to the North Pole, complete with hot chocolate and cookies served on board the train. Passengers will then be entertained by a reading of THE POLAR EXPRESS. Upon arrival at the North Pole, Santa will greet the children and each child will receive their own sleigh bell, just like in the movie, to those who BELIEVE.

A Christmas Carol 2014 (2:00pm & 7:00pm)

This beloved production with outstanding sets and lavish costumes from the nationally touring Nebraska Theater Caravan has become the gem of New Bedford's holiday traditions. Starring miserly old Ebenezer Scrooge, this classic tale of love, generosity and the Spirit of Christmas stirs the hearts

of audience members young and old. Join our Zeiterion family for a matinee or evening performance and experience the joy of the season! Tickets: <https://ticketing.zeiterion.org/public/Default.asp>

Painting with a Splash: Hot Cocoa (6:00pm)

Welcome to Painting with a Splash Where you are the artist! Painting with a Splash is the newest addition to Historic Whaling City Downtown New Bedford. Bringing you an experience of art as entertainment. Add a little wine (BYOB) that will surely tap into your creative side. With step by step instruction and a little music, you and your friends will create the evenings featured painting with a splash of your own uniqueness. NO EXPERIENCE NECESSARY! Just a desire to have fun.

Want to sponsor this weekend guide? Contact info@newbedfordguide.com for more details.

Sobriety checkpoint for Bristol County planned this weekend

Colonel Timothy P. Alben, Superintendent of the Massachusetts State Police, announced that a "Sobriety Checkpoint" will be implemented by the Massachusetts State Police on a Public Way in Bristol County from Friday December 12 into Saturday December 13.

The purpose is to further educate the motoring public and strengthen the public's awareness to the need of detecting and removing those motorists who operate under the influence of alcohol and/or drugs from our roadways.

It will be operated during varied hours, the selection of vehicles will not be arbitrary, safety will be assured, and any inconveniences to motorists will be minimized with advance notice to reduce fear and anxiety.

24 Things to do this Weekend (Dec 5- Dec 7)

This weekend will be a rather unusually warm one for this time of year. We've already had a bit of snow and temperatures in the teens...and here we are with a Saturday that will reach 56 degrees. As the saying goes, "Don't like the weather? Wait 5 minutes." We'll have some rain on Saturday and some Sunday morning. Sunday also features the coolest low – 29 degrees in the morning. However, it will "warm" up to a "balmy" 42 degrees. Break out those ugly turtlenecks and sweaters!



As always, click on the title for more or detailed information on the event. Most of the events were pulled from our [event calendar](#) where you can find hundreds of local area events each month. The event calendar is FREE, so if you are a local business, and not taking advantage of FREE publicity, shame on you! Are you a local business and want to sponsor this high traffic, weekend guide? Contact info@newbedfordguide.com for more details. Have an event to add? Check out our [tutorial](#). For more info, you can click on each title. Know of another event this weekend? Post a reply!

Friday, December 5th

Edaville: XMas Festival of Lights (2:00pm-9:00pm)

Edaville's Christmas Festival of Lights is arguably the most-loved festival of its kind, having earned generations of loyal fans. Passengers relax comfortably in warm and dry coaches while riding through a spectacular holiday setting featuring an explosion of lights. Kids of all ages will enjoy an array of vintage amusement rides and a visit with Santa in one of our indoor play areas. Stay for a delicious full meal or enjoy seasonal treats while roaming our sprawling and beautifully decorated grounds featuring thousands of Christmas displays. For more info and/or tickets, click on event title.



Only at the Z Friday evening!

Cove Street Neighborhood Association Christmas Tree Lighting (5:00-8:30pm)

Tree Lighting at 6:00pm, at Loretta Bourque Park, Ruth and Ashley Streets. Santa Claus is coming to town with Mrs. Claus for this special occasion to visit with all of the girls and boys around 5:30pm.

Painting with a Splash: Christmas Cheer & Snowman (7:00pm)

Welcome to Painting with a Splash Where you are the artist! Painting with a Splash is the newest addition to Historic Whaling City Downtown New Bedford. Bringing you an experience of art as entertainment. Add a little wine (BYOB) that will surely tap into your creative side. With step by step instruction and a little music, you and your friends will create the evenings featured painting with a splash of your own uniqueness. NO EXPERIENCE NECESSARY! Just a desire to have fun.

New Bedford High School Theatre Presents: Ken Ludwig's Lend Me a Tenor (8pm)

The New Bedford High School Drama Club will raise the curtain on its Fall 2014 Production with, Ken Ludwig's Lend Me A Tenor, December 5, 6 and 7 in New Bedford High School's Bronspiegel Auditorium.

Audiences will enjoy this hilarious comedy that is described as, "A furiously paced comedy with more than a touch of the Marx brothers... A marvelous combination of wonderful farcical moments and funny lines," by Time Out New York.

"Lend Me A Tenor" will be presented at 8pm on December 5th and 6th and at 2pm on December 7th at NBHS's Bronspiegel Auditorium, 230 Hathaway Blvd., New Bedford, MA 02740. Seats are limited so reserve your tickets now!

Tickets are \$10 general admission \$8 for students and seniors (Group discounts available) and are available by email – nbhsdctickets@gmail.com– or by visiting the NBHS Box office two hours prior to the show.

Jenny McCarthy's "Dirty, Sexy, Funny." (8:00pm)

With the help of a hilarious, all-female slate of stand-up comedians, Jenny McCarthy takes an outrageous look at life as a contemporary woman: from single motherhood to casual sex. Shot at the Hard Rock Hotel & Casino, this one-hour special includes sets from Justine Marino, Tammy Pescatelli, Lynne Koplitz, Paula Bel and April Macie, as well as a series of sketch vignettes from McCarthy herself.

 **DOWNTOWN**
New Bedford *presents*

*Downtown
New Bedford*

7th Annual **Holiday Stroll** *This Year*
Shop Local!

Saturday & Sunday
December 6 & 7, 2014
Beginning at noon each day

Trying to find a gift for that hard to buy for person?
Searching for a place that has something
for everybody in your family?

Downtown New Bedford has everything
you need for a jolly holiday.

Handmade Goods Antique Fire Truck rides
Boutique Shopping Parade
Creative Cuisine Tree Lighting Ceremony
Children's Activities light show and a new surprise!
Live Entertainment *& So Much More!*
Santa & Mrs. Claus

 *New this year*
Look for all the beautifully decorated windows and help pick the winners in
the "Deck the Windows" decorating contest. View the windows and cast
your ballot to vote for your favorites!

  **Destination**
New Bedford 

For more information contact
Downtown New Bedford, Inc 508.990.2777
or visit www.downtownnb.org

Downtown New Bedford's 2014 Holiday Stroll!

Saturday, December 6th

XMas Trees!!! Silverbrook ACUSHNET Country Store – Holiday pies, cakes and cookies (9:00am-4:00pm)

Get your fresh cut XMas tree today! Thinking of the holidays and don't want to bake? Let the Pereira Bread Co. (a tasty little division of Silverbrook Farm) do the baking for you by ordering one of our famous pies, cakes and cookies. Silverbrook Country Store also has a wonderful and unique line of crafts including their popular candle/potpourri items and a great selection of handmade Amish items that truly make great gifts for any occasion.



Head to Silverbrook Farm ACUSHNET to meet Santa, Mrs. Claus, Big Elf, and for hay rides, face painting and more!

Christmas Arts and Crafts Sale (Dartmouth) (9:30am-3:00pm)

Quality gifts and crafts from many local businesses and home-based artists. Fresh green wreaths, gift raffle, silent auction. Eat-in or take-out: lobster rolls, meat pies, chowder and soup. Congregational Church 17 Middle St. South Dartmouth, Mass.

5th Annual Santa Farm Follies (10:00am-4:00pm)

Want to meet Santa? Head to Silverbrook Farm ACUSHNET for the 5th annual Santa Farm Follies! Mrs. Claus and "Big Elf" will also make appearances. There will be hay rides, face painting

and more!

It's Beginning to Look A Lot Like Christmas at the Newport Mansions (10:00am-5:00 pm)

The glitter of gold and the sparkle of silver will dazzle you as you tour three magnificent mansions decked out in Yuletide finery. Music, tours, and spectacular decorations highlight the celebration of Christmas at the Newport Mansions. For more information, click on event title.

Downtown New Bedford Holiday Stroll (12:00pm-4:00 pm)

The Holiday Stroll weekend will kick off with The "Official" Santa and Mrs. Claus arriving at Custom House Square Park by antique fire truck. Santa will "stroll" with his admirers to MARE Studios on Center Street, where he will greet his young friends and pose for free, souvenir photos. Then Santa and Mrs. Claus will join the NB High and All-City Middle School Marching Bands and Color Guard for a parade up William Street to the Library steps. Mayor Jon Mitchell will welcome all for the City's official Tree Lighting Ceremony. For schedule and more info: <http://www.downtownnb.org/holidaystroll.html>.



Creative Auctions Holiday Auction (1pm – close)

Looking for some deep discounted NEW items? Creative Auctions is hosting their annual Holiday Auction. Doors open at 1pm and auctions start at 2pm at the Days Inn on 500 Hathaway Rd in New Bedford.

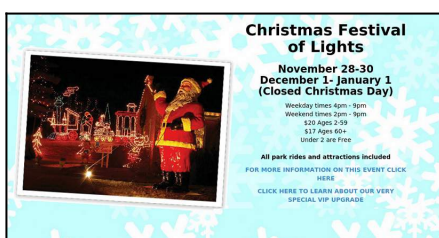
Winter Wonderland Celebration for New Bedford Residence

(2-5pm)

Join the Parks, Recreations & Beaches Department at the Andrea McCoy Recreation Center (181 Hillman Street) Saturday December 6, from 2pm-5pm for holiday crafts, winter sports activities, a hot cocoa bar, and holiday movies as well as other fun activities. In the spirit of giving, the Andrea McCoy recreation center will open its doors to offer free family recreation at a Winter Wonderland Holiday Celebration. Families will have the opportunity to continue the giving through gift making activities. Full details: <http://www.newbedfordguide.com/winter-wonderland-andrea-mccoy/2014/11/09>

Edaville: XMas Festival of Lights (2:00pm-9:00pm)

Edaville's Christmas Festival of Lights is arguably the most-loved festival of its kind, having earned generations of loyal fans. Passengers relax comfortably in warm and dry coaches while riding through a spectacular holiday setting featuring an explosion of lights. Kids of all ages will enjoy an array of vintage amusement rides and a visit with Santa in one of our indoor play areas. Stay for a delicious full meal or enjoy seasonal treats while roaming our sprawling and beautifully decorated grounds featuring thousands of Christmas displays. For more info and/or tickets, click on event title.



It's that time of year!

Dartmouth High School Theatre: "A Christmas Carol: Scrooge and Marley" (2:00 & 7:00 pm)

Dartmouth High School Theatre: "A Christmas Carol: Scrooge and Marley," \$12, \$10 for students and seniors. (508) 961-7200,

ext. 402. 555 Bakerville Rd.

Painting with a Splash: Xmass Candle(12+), Winter Fun City & Snow Trees (3:00pm, 7:00pm & 7:00pm)

Welcome to Painting with a Splash Where you are the artist! Painting with a Splash is the newest addition to Historic Whaling City Downtown New Bedford. Bringing you an experience of art as entertainment. Add a little wine (BYOB) that will surely tap into your creative side. With step by step instruction and a little music, you and your friends will create the evenings featured painting with a splash of your own uniqueness. NO EXPERIENCE NECESSARY! Just a desire to have fun.

City of New Bedford's Christmas Parade and Official Christmas Tree Lighting (4:00-6:00pm)

Parade begins at 4pm at William Street and North Water Street, proceeds up William Street to Pleasant Street to the Tree Lighting at the New Bedford Main Library on 613 Pleasant Street at 5pm.

Gallery X: Xmas Show (7:00-10:00 pm)

Head downtown to Gallery X for their annual XMas show. Opening reception 7-10 p.m. Phone: (508) 992-2675, info@galleryx.org or www.galleryx.org. 169 William St.

New Bedford High School Theatre Presents: Ken Ludwig's Lend Me a Tenor (8pm)

The New Bedford High School Drama Club will raise the curtain on its Fall 2014 Production with, Ken Ludwig's Lend Me A Tenor, December 5, 6 and 7 in New Bedford High School's Bronspiegel Auditorium.

Audiences will enjoy this hilarious comedy that is described as, "A furiously paced comedy with more than a touch of the Marx brothers... A marvelous combination of wonderful farcical moments and funny lines," by Time Out New York.

“Lend Me A Tenor” will be presented at 8pm on December 5th and 6th and at 2pm on December 7th at NBHS’s Bronspiegel Auditorium, 230 Hathaway Blvd., New Bedford, MA 02740. Seats are limited so reserve your tickets now!

Tickets are \$10 general admission \$8 for students and seniors (Group discounts available) and are available by email – nbhsdctickets@gmail.com– or by visiting the NBHS Box office two hours prior to the show.

Sunday, December 7th

XMas Trees!!! Silverbrook ACUSHNET Country Store – Holiday pies, cakes and cookies (9:00am-4:00pm)

Get your fresh cut XMas tree today! Thinking of the holidays and don’t want to bake? Let the Pereira Bread Co. (a tasty little division of Silverbrook Farm) do the baking for you by ordering one of our famous pies, cakes and cookies. Silverbrook Country Store also has a wonderful and unique line of crafts including their popular candle/potpourri items and a great selection of handmade Amish items that truly make great gifts for any occasion.

It’s Beginning to Look A Lot Like Christmas at the Newport Mansions (10:00am-5:00 pm)

The glitter of gold and the sparkle of silver will dazzle you as you tour three magnificent mansions decked out in Yuletide finery. Music, tours, and spectacular decorations highlight the celebration of Christmas at the Newport Mansions. For more information, click on event title.



*Have fun
painting "XMass
Candle" at
Painting w/ a
Splash!*

1st Annual Holiday Bazaar (Marion) (11:00am-5:00pm)

Marion's first annual holiday bazaar takes place at VFW Post 2425, 465 Mill Street in Marion. There will be tons of crafts, art and more! Email Amie at momp5031@gmail.com or Caroline at whoosh@operamail.com. Call or text Caroline at 978.382.2139.

Downtown New Bedford Holiday Stroll (12:00pm-4:00 pm)

The Holiday Stroll weekend will kick off with The "Official" Santa and Mrs. Claus arriving at Custom House Square Park by antique fire truck. Santa will "stroll" with his admirers to MARE Studios on Center Street, where he will greet his young friends and pose for free, souvenir photos. Then Santa and Mrs. Claus will join the NB High and All-City Middle School Marching Bands and Color Guard for a parade up William Street to the Library steps. Mayor Jon Mitchell will welcome all for the City's official Tree Lighting Ceremony. For schedule and more info: <http://www.downtownnb.org/holidaystroll.html>

New Bedford High School Theatre Presents: Ken Ludwig's Lend Me a Tenor (2pm)

The New Bedford High School Drama Club will raise the curtain on its Fall 2014 Production with, Ken Ludwig's Lend Me A

Tenor, December 5, 6 and 7 in New Bedford High School's Bronspiegel Auditorium.

Audiences will enjoy this hilarious comedy that is described as, "A furiously paced comedy with more than a touch of the Marx brothers... A marvelous combination of wonderful farcical moments and funny lines," by Time Out New York.

"Lend Me A Tenor" will be presented at 8pm on December 5th and 6th and at 2pm on December 7th at NBHS's Bronspiegel Auditorium, 230 Hathaway Blvd., New Bedford, MA 02740. Seats are limited so reserve your tickets now!

Tickets are \$10 general admission \$8 for students and seniors (Group discounts available) and are available by email – nbhsdctickets@gmail.com– or by visiting the NBHS Box office two hours prior to the show.

Edaville: XMas Festival of Lights & Polar Express Train Ride (2:00pm-9:00pm)

Edaville's Christmas Festival of Lights is arguably the most-loved festival of its kind, having earned generations of loyal fans. Passengers relax comfortably in warm and dry coaches while riding through a spectacular holiday setting featuring an explosion of lights. Kids of all ages will enjoy an array of vintage amusement rides and a visit with Santa in one of our indoor play areas. Stay for a delicious full meal or enjoy seasonal treats while roaming our sprawling and beautifully decorated grounds featuring thousands of Christmas displays.



*Polar Express Ride and
XMas Festival of*

Lights at Edaville

USA!

Polar Express is inspired by the run-away hit movie! This holiday favorite comes to life as you and your family take a ride on THE POLAR EXPRESS™ Train Ride. Set to the sounds of the motion picture soundtrack, families are sure to enjoy their trip to the North Pole, complete with hot chocolate and cookies served on board the train. Passengers will then be entertained by a reading of THE POLAR EXPRESS. Upon arrival at the North Pole, Santa will greet the children and each child will receive their own sleigh bell, just like in the movie, to those who BELIEVE.

American Big Band: "Home for the Holidays" (2:00 pm)

The best of American Big Band comes to the Z for a Christmas showcase of all the holiday favorites. Featuring a 12-piece orchestra and eight singers and dancers, this musical extravaganza is perfect for the whole family. Join us for this medley of classics from Bing to Buble.

Painting with a Splash: Winter Trees & Snowman (12+) (3:00pm)

Welcome to Painting with a Splash Where you are the artist! Painting with a Splash is the newest addition to Historic Whaling City Downtown New Bedford. Bringing you an experience of art as entertainment. Add a little wine (BYOB) that will surely tap into your creative side. With step by step instruction and a little music, you and your friends will create the evenings featured painting with a splash of your own uniqueness. NO EXPERIENCE NECESSARY! Just a desire to have fun.



If you love Big Band, you won't want to miss "Home For The Holidays!"

Clasky Common Park Festival of Lights Celebration & Tree Lighting (5:00pm)

Clasky Common Park, at County Street and Pearl Street, Festival of Lights Celebration, Tree Lighting at 5:00pm.

Far North End Neighborhood Association Tree Lighting (6:15pm)

Far North End Neighborhood Association Tree Lighting, at Fire Station No. 5, 3665 Acushnet Avenue. Santa is Claus coming to town with Mrs. Claus for this special occasion to visit with all of the girls and boys around 6:45pm.

Want to sponsor this weekend guide? Contact info@newbedfordguide.com for more details.

19 Things to do this Weekend (Nov 28- Nov 30)

While off to a rocky start with a bit of snow on Friday, the weekend will gradually improve in terms of temperature and precipitation. We'll have a disparity of almost twenty degrees

between Saturday and Sunday. With a high of 36 degrees on Saturday and a mixture of clouds and sun and a much warmer Sunday with a high of 55 degrees. That's, like, t-shirt weather!



As always, click on the title for more or detailed information on the event. Most of the events were pulled from our [event calendar](#) where you can find hundreds of local area events each month. The event calendar is FREE, so if you are a local business, and not taking advantage of FREE publicity, shame on you! Are you a local business and want to sponsor this high traffic, weekend guide? Contact info@newbedfordguide.com for more details. Have an event to add? Check out our [tutorial](#). For more info, you can click on each title. Know of another event this weekend? Post a reply!

Friday, November 28th

Edaville: XMas Festival of Lights (2:00pm-9:00pm)

Edaville's Christmas Festival of Lights is arguably the most-loved festival of its kind, having earned generations of loyal fans. Passengers relax comfortably in warm and dry coaches while riding through a spectacular holiday setting featuring an explosion of lights. Kids of all ages will enjoy an array of vintage amusement rides and a visit with Santa in one of our indoor play areas. Stay for a delicious full meal or enjoy

seasonal treats while roaming our sprawling and beautifully decorated grounds featuring thousands of Christmas displays. For more info and/or tickets, click on event title.



Have fun painting "Cat On A Fence" at Painting w/ a Splash!

Sparkle! An outdoor family event (Bristol, R.I.) (6:00pm-8:00pm)

Festive fun for the entire family! Come, stroll through Blithewold's illuminated gardens and Greenhouse, breathe in that crisp Christmas air, or join our carolers as they spread holiday cheer. Come, enjoy music, cocoa, and roasted marshmallows around a roaring bonfire in Blithewold's Enclosed Garden. Carol singing begins at 6:30 p.m. around the bonfire. Hot Cocoa is free; S'mores kits will be available for \$1. Blithewold Mansion, Gardens & Arboretum 101 Ferry Road Bristol, R.I. 02809.

Painting with a Splash: Van Gogh City (7:00pm)

Welcome to Painting with a Splash Where you are the artist! Painting with a Splash is the newest addition to Historic Whaling City Downtown New Bedford. Bringing you an experience of art as entertainment. Add a little wine (BYOB) that will surely tap into your creative side. With step by step

instruction and a little music, you and your friends will create the evenings featured painting with a splash of your own uniqueness. NO EXPERIENCE NECESSARY! Just a desire to have fun.

Saturday, November 29th

Small Business Saturday

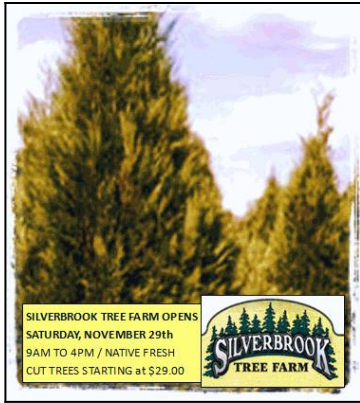
Numerous businesses in the region will be taking part by opening their locations that day to promote shopping local. List of businesses offering special sales, deals, and promotions: <http://newbedfordchamber.com/shopsmall/>

XMas Trees!!! Silverbrook ACUSHNET Country Store – Holiday pies, cakes and cookies (9:00am-4:00pm)

Get your fresh cut XMas tree today! Thinking of the holidays and don't want to bake? Let the Pereira Bread Co. (a tasty little division of Silverbrook Farm) do the baking for you by ordering one of our famous pies, cakes and cookies. Silverbrook Country Store also has a wonderful and unique line of crafts including their popular candle/potpourri items and a great selection of handmade Amish items that truly make great gifts for any occasion.

28th Annual Christmas Bazaar (Westport) (9:00am-3:00pm)

Our Lady of Grace Parish Center: Winner-Every-Time Table, Elf's Pot of Gold, 30 craft tables and more. Kitchen open all weekend. Pictures with Santa and Christmas music. FREE admission. 569 Sanford Road, Westport.



Get your Xmas trees at Silverbrook Farm ACUSHNET!

NB Voc-Tech Craft Fair (9:30am-4:00pm)

The 2014 Greater New Bedford Regional Vocational Technical High School Annual Scholarship Craft Fair is on!!! The event is indoors and is rain or shine.

Holiday Open Studios (10:00am-5:00 pm)

Come home for the holidays with artisan handmade style and home decor. Leave the malls behind and come out for a ride to the calm of country back roads. It's all about taking the time to live artfully and with attention! Add to your family traditions or start new ones with a harvest of handcrafted handwoven textiles from the Amy C. Lund Studio & Gallery in the historic Nonquit Grange at the Mill Pond Shops in Tiverton, R.I.

It's Beginning to Look A Lot Like Christmas at the Newport Mansions (10:00am-5:00 pm)

The glitter of gold and the sparkle of silver will dazzle you as you tour three magnificent mansions decked out in Yuletide finery. Music, tours, and spectacular decorations highlight the celebration of Christmas at the Newport Mansions. For more information, click on event title.

Edaville: XMas Festival of Lights (2:00pm-9:00pm)

Edaville's Christmas Festival of Lights is arguably the most-

loved festival of its kind, having earned generations of loyal fans. Passengers relax comfortably in warm and dry coaches while riding through a spectacular holiday setting featuring an explosion of lights. Kids of all ages will enjoy an array of vintage amusement rides and a visit with Santa in one of our indoor play areas. Stay for a delicious full meal or enjoy seasonal treats while roaming our sprawling and beautifully decorated grounds featuring thousands of Christmas displays. For more info and/or tickets, click on event title.



**Christmas Festival
of Lights**

**November 28-30
December 1- January 1
(Closed Christmas Day)**

Weekday times 4pm - 9pm
Weekend times 2pm - 9pm
\$20 Ages 2-59
\$17 Ages 60+
Under 2 are Free

All park rides and attractions included

[FOR MORE INFORMATION ON THIS EVENT CLICK
HERE](#)

[CLICK HERE TO LEARN ABOUT OUR VERY
SPECIAL VIP UPGRADE](#)

It's that time of year!

Painting with a Splash: Candle (8+), Cat On Fence, Orange Sky Lighthouse, & Moonrise (12:30pm, 3:00pm & 7:00pm)

Welcome to Painting with a Splash Where you are the artist! Painting with a Splash is the newest addition to Historic Whaling City Downtown New Bedford. Bringing you an experience of art as entertainment. Add a little wine (BYOB) that will surely tap into your creative side. With step by step instruction and a little music, you and your friends will create the evenings featured painting with a splash of your own uniqueness. NO EXPERIENCE NECESSARY! Just a desire to have fun.

Darlene Love – Love for the Holidays at the “Z” (8:00pm)

Rock n’ Roll Hall of Famer, Darlene Love will rock The Z with her rendition of Christmas classics, along with her #1 hits and more. From backup singer, to girl-group diva and now a

superstar vocalist, Love is at the top of her career. She starred in the Oscar®-winning documentary, “20 Feet from Stardom” and made all of Hollywood stand with applause after she burst into song while accepting her award. Read the NBG exclusive interview [here](#).

Sunday, November 30th

28th Annual Christmas Bazaar (Westport) (9:00am-1:00pm)

Our Lady of Grace Parish Center: Winner-Every-Time Table, Elf’s Pot of Gold, 30 craft tables and more. Kitchen open all weekend. Pictures with Santa and Christmas music. FREE admission. 569 Sanford Road, Westport.

XMas Trees!!! Silverbrook ACUSHNET Country Store – Holiday pies, cakes and cookies (9:00am-4:00pm)

Get your fresh cut XMas tree today! Thinking of the holidays and don’t want to bake? Let the Pereira Bread Co. (a tasty little division of Silverbrook Farm) do the baking for you by ordering one of our famous pies, cakes and cookies. Silverbrook Country Store also has a wonderful and unique line of crafts including their popular candle/potpourri items and a great selection of handmade Amish items that truly make great gifts for any occasion.



27 years and running!

NB Voc-Tech Craft Fair (9:30am-3:00pm)

The 2014 Greater New Bedford Regional Vocational Technical High School Annual Scholarship Craft Fair is on!!! The event is indoors and is rain or shine.

It's Beginning to Look A Lot Like Christmas at the Newport Mansions (10:00am-5:00 pm)

The glitter of gold and the sparkle of silver will dazzle you as you tour three magnificent mansions decked out in Yuletide finery. Music, tours, and spectacular decorations highlight the celebration of Christmas at the Newport Mansions. For more information, click on event title.

Painting with a Splash: Sunflower (12:00pm)

Welcome to Painting with a Splash Where you are the artist! Painting with a Splash is the newest addition to Historic Whaling City Downtown New Bedford. Bringing you an experience of art as entertainment. Add a little wine (BYOB) that will surely tap into your creative side. With step by step instruction and a little music, you and your friends will create the evenings featured painting with a splash of your own uniqueness. NO EXPERIENCE NECESSARY! Just a desire to have fun.

Edaville: XMas Festival of Lights & Polar Express Train Ride (2:00pm-9:00pm)

Edaville's Christmas Festival of Lights is arguably the most-loved festival of its kind, having earned generations of loyal fans. Passengers relax comfortably in warm and dry coaches while riding through a spectacular holiday setting featuring an explosion of lights. Kids of all ages will enjoy an array of vintage amusement rides and a visit with Santa in one of our indoor play areas. Stay for a delicious full meal or enjoy seasonal treats while roaming our sprawling and beautifully decorated grounds featuring thousands of Christmas displays.



Polar Express Ride and XMas Festival of Lights at Edaville USA!

Polar Express is inspired by the run-away hit movie! This holiday favorite comes to life as you and your family take a ride on THE POLAR EXPRESS™ Train Ride. Set to the sounds of the motion picture soundtrack, families are sure to enjoy their trip to the North Pole, complete with hot chocolate and cookies served on board the train. Passengers will then be entertained by a reading of THE POLAR EXPRESS. Upon arrival at the North Pole, Santa will greet the children and each child will receive their own sleigh bell, just like in the movie, to those who BELIEVE.

NBSO A Thanksgiving Musical Feast (8:00 pm)

Handel's grand oratorio, Messiah, is one of the best-known and most frequently performed choral works in the world. This year

the NBSO has added a few twists to its South Coast tradition of performing Messiah over Thanksgiving weekend: Johann Sebastian Bach's glorious Gloria in excelsis Deo, the majestic "Amen" from part three of Messiah, and all the ease and convenience of your favorite concert location, the Zeiterion Performing Arts Center! With guest artists Sonja Tengblad, soprano; Deborah Rentz-Moore, alto; Matthew Anderson, tenor; Andrew Garland, bass; and singers from several regional choruses.

Want to sponsor this weekend guide? Contact info@newbedfordguide.com for more details.

17 Things to do this Weekend (Nov 21- Nov 23)

After a bitter Friday morning with temperatures as low as 18 degrees, we'll spend the rest of the weekend warming up. By Sunday afternoon we'll have reached a balmy 51 degrees! The sun will be out through most of the weekend, and there won't be any snow or rain. Cool weather is here to stay, so wipe the dust off of those Winter coats, thermals and stocking hats.



As always, click on the title for more or detailed information on the event. Most of the events were pulled from our [event calendar](#) where you can find hundreds of local area events each month. The event calendar is FREE, so if you are a local business, and not taking advantage of FREE publicity, shame on you! Are you a local business and want to sponsor this high traffic, weekend guide? Contact info@newbedfordguide.com for more details. Have an event to add? Check out our [tutorial](#). For more info, you can click on each title. Know of another event this weekend? Post a reply!

Friday, November 21st

Edaville: XMas Festival of Lights & Polar Express Train Ride (Military Appreciation Weekend) (2:00pm-9:00pm)

Edaville's Christmas Festival of Lights is arguably the most-loved festival of its kind, having earned generations of loyal fans. Passengers relax comfortably in warm and dry coaches while riding through a spectacular holiday setting featuring an explosion of lights. Kids of all ages will enjoy an array of vintage amusement rides and a visit with Santa in one of our indoor play areas. Stay for a delicious full meal or enjoy seasonal treats while roaming our sprawling and beautifully decorated grounds featuring thousands of Christmas displays.

Polar Express is inspired by the run-away hit movie! This

holiday favorite comes to life as you and your family take a ride on THE POLAR EXPRESS™ Train Ride. Set to the sounds of the motion picture soundtrack, families are sure to enjoy their trip to the North Pole, complete with hot chocolate and cookies served on board the train. Passengers will then be entertained by a reading of THE POLAR EXPRESS. Upon arrival at the North Pole, Santa will greet the children and each child will receive their own sleigh bell, just like in the movie, to those who BELIEVE.



Have fun painting "Cabin In The Woods" at Painting w/ a Splash!

"You're a Good Man, Charlie Brown" Musical (For Alzheimer's) (6:30pm)

ONE Theater Group is proud to announce its upcoming production of "You're a Good Man, Charlie Brown." The show is fun and entertaining for all ages, but it also serves a very important purpose – all of the proceeds will be donated to the Alzheimer's Association. The show is being produced by ONE Theater Group, a newly formed company in Fairhaven with a vision of combining theater and philanthropy. For more info click on event title.

Painting with a Splash: Birch Tree & Cheers (7:00pm)

Welcome to Painting with a Splash Where you are the artist!

Painting with a Splash is the newest addition to Historic Whaling City Downtown New Bedford. Bringing you an experience of art as entertainment. Add a little wine (BYOB) that will surely tap into your creative side. With step by step instruction and a little music, you and your friends will create the evenings featured painting with a splash of your own uniqueness. NO EXPERIENCE NECESSARY! Just a desire to have fun.

Saturday, November 22nd

Silverbrook ACUSHNET Country Store – Holiday pies, cakes and cookies (9:00am-4:00pm)

Thinking of the holidays and don't want to bake? Let the Pereira Bread Co. (a tasty little division of Silverbrook Farm) do the baking for you by ordering one of our famous pies, cakes and cookies. Pick up date is Wednesday, November 26th from 12:00-6:00pm. To order call 774-263-8850 or email thesilverbrookfarm@gmail.com! Silverbrook Country Store also has a wonderful and unique line of crafts including their popular candle/potpourri items and a great selection of handmade Amish items that truly make great gifts for any occasion.

Gingerbread House Demonstration & Class (9:30am)

If you have always wanted to learn how to construct a gingerbread house or if you are looking to take your baking and decorating skills to the next level, you will have the opportunity to do so at the Rotch-Jones-Duff House and Garden Museum during the Gingerbread House Demonstration. In this 1.5 hour class, Katherine Mullins will construct a house, sleigh and Santa as well as demonstrate techniques using royal icing and chocolate for "gluing." Take home a booklet with dough, icing and cookie recipes and an assortment of patterns.



*Great music and
comedy while
helping a cause!*

New Bedford Open Studios (10:00am-5:00 pm)

Celebrating 10 years with a weekend of arts, food and giving! Helen Granger will be one of the artists taking part. Events taking place at Hatch Street Studios, 88 Hatch St. and Ropeworks, 123 Sawyer St. For information visit www.newbedfordopenstudios.org. Hatch Street Studios and Ropeworks.

It's Beginning to Look A Lot Like Christmas at the Newport Mansions (10:00am-5:00 pm)

The glitter of gold and the sparkle of silver will dazzle you as you tour three magnificent mansions decked out in Yuletide finery. Music, tours, and spectacular decorations highlight the celebration of Christmas at the Newport Mansions. For more information, click on event title.

Edaville: XMas Festival of Lights & Polar Express Train Ride (Military Appreciation Weekend) (2:00pm-9:00pm)

Edaville's Christmas Festival of Lights is arguably the most-loved festival of its kind, having earned generations of loyal fans. Passengers relax comfortably in warm and dry coaches while riding through a spectacular holiday setting featuring an explosion of lights. Kids of all ages will enjoy an array of vintage amusement rides and a visit with Santa in one of our indoor play areas. Stay for a delicious full meal or enjoy seasonal treats while roaming our sprawling and beautifully decorated grounds featuring thousands of Christmas displays.

Polar Express is inspired by the run-away hit movie! This holiday favorite comes to life as you and your family take a ride on THE POLAR EXPRESS™ Train Ride. Set to the sounds of the motion picture soundtrack, families are sure to enjoy their trip to the North Pole, complete with hot chocolate and cookies served on board the train. Passengers will then be entertained by a reading of THE POLAR EXPRESS. Upon arrival at the North Pole, Santa will greet the children and each child will receive their own sleigh bell, just like in the movie, to those who BELIEVE.

Painting with a Splash: Dragonfly (15+) & 3 Glasses of Wine (3:00pm & 7:00pm)

Welcome to Painting with a Splash Where you are the artist! Painting with a Splash is the newest addition to Historic Whaling City Downtown New Bedford. Bringing you an experience of art as entertainment. Add a little wine (BYOB) that will surely tap into your creative side. With step by step instruction and a little music, you and your friends will create the evenings featured painting with a splash of your own uniqueness. NO EXPERIENCE NECESSARY! Just a desire to have fun.

“You’re a Good Man, Charlie Brown” Musical (For Alzheimer’s) (6:30pm)

ONE Theater Group is proud to announce its upcoming production of “You’re a Good Man, Charlie Brown.” The show is fun and entertaining for all ages, but it also serves a very important purpose – all of the proceeds will be donated to the Alzheimer’s Association. The show is being produced by ONE Theater Group, a newly formed company in Fairhaven with a vision of combining theater and philanthropy. For more info click on event title.

Bon Jovi Tribute Band and Comedian Pete Costello (7:30pm)

Still a fan of Bon Jovi? How about some laughs? Comedy and music join forces at the Skyroom to raise money for the Dartmouth School Music Association National Champion Marching

Band and Indoor Team. National act, Bon Jovi tribute band "Living On A Bad Name" will headline with special guest, Boston comedian Pete Costello. 651 Orchard Street, New Bedford. Email: mjbccabral@gmail.com.

Sunday, November 23rd

Lebanese food Festival & Craft Fair (Fall River) (9:00am-4:00pm)

Come and enjoy home made Lebanese foods and pastries. Eat in or take out available. Shop our local crafters for that special holiday gift. We have a limited number of name brand coats (irregulars) for sale at great prices. Come and enjoy Lebanese hospitality. Email: terrygalib@comcast.net. St. Anthony of the Desert 300 No. Eastern Ave. Fall River.

Silverbrook ACUSHNET Country Store – Holiday pies, cakes and cookies (9:00am-4:00pm)

Thinking of the holidays and don't want to bake? Let the Pereira Bread Co. (a tasty little division of Silverbrook Farm) do the baking for you by ordering one of our famous pies, cakes and cookies. Pick up date is Wednesday, November 26th from 12:00-6:00pm. To order call 774-263-8850 or email thesilverbrookfarm@gmail.com! Silverbrook Country Store also has a wonderful and unique line of crafts including their popular candle/potpourri items and a great selection of handmade Amish items that truly make great gifts for any occasion.

It's Beginning to Look A Lot Like Christmas at the Newport Mansions (10:00am-5:00 pm)

The glitter of gold and the sparkle of silver will dazzle you as you tour three magnificent mansions decked out in Yuletide finery. Music, tours, and spectacular decorations highlight the celebration of Christmas at the Newport Mansions. For more

information, click on event title.



*Polar Express Ride
(and XMas Festival of
Lights) during
Military Appreciation
Weekend!*

**Painting with a Splash: SSunset Moon & Cabin In The Woods
(11:00am & 6:00pm)**

Welcome to Painting with a Splash Where you are the artist! Painting with a Splash is the newest addition to Historic Whaling City Downtown New Bedford. Bringing you an experience of art as entertainment. Add a little wine (BYOB) that will surely tap into your creative side. With step by step instruction and a little music, you and your friends will create the evenings featured painting with a splash of your own uniqueness. NO EXPERIENCE NECESSARY! Just a desire to have fun.

New Bedford Open Studios (11:00am-5:00 pm)

Celebrating 10 years with a weekend of arts, food and giving. Helen Granger will be one of the artists taking part. Events taking place at Hatch Street Studios, 88 Hatch St. and Ropeworks, 123 Sawyer St. For information visit www.newbedfordopenstudios.org. Hatch Street Studios and Ropeworks.

**Edaville: XMas Festival of Lights & Polar Express Train Ride
(Military Appreciation Weekend) (2:00pm-9:00pm)**

Edaville's Christmas Festival of Lights is arguably the most-

loved festival of its kind, having earned generations of loyal fans. Passengers relax comfortably in warm and dry coaches while riding through a spectacular holiday setting featuring an explosion of lights. Kids of all ages will enjoy an array of vintage amusement rides and a visit with Santa in one of our indoor play areas. Stay for a delicious full meal or enjoy seasonal treats while roaming our sprawling and beautifully decorated grounds featuring thousands of Christmas displays.

Polar Express is inspired by the run-away hit movie! This holiday favorite comes to life as you and your family take a ride on THE POLAR EXPRESS™ Train Ride. Set to the sounds of the motion picture soundtrack, families are sure to enjoy their trip to the North Pole, complete with hot chocolate and cookies served on board the train. Passengers will then be entertained by a reading of THE POLAR EXPRESS. Upon arrival at the North Pole, Santa will greet the children and each child will receive their own sleigh bell, just like in the movie, to those who BELIEVE.

Want to sponsor this weekend guide? Contact info@newbedfordguide.com for more details.
