

Massachusetts State Police investigating bridge strike on Rt. 18 New Bedford

“At approximately, 12:15pm Massachusetts State Police and New Bedford Police responded to reports of an accident on Rt. 18.

Upon arrival, officials found that a construction tractor-trailer transporting heavy machinery had struck the bridge on Rt. 18 obstructing traffic for anyone wishing to travel East on Rt. 6 and cross the New Bedford-Fairhaven Bridge.

Traffic on Rt. 18 north near Elm Street was slowed down to a crawl and looked like a parking lot. Eyewitnesses reported smashed pieces of an excavator were littered across the road. The arm of the excavator itself could be seen bent and warped suggesting the impact to the overpass was significant.

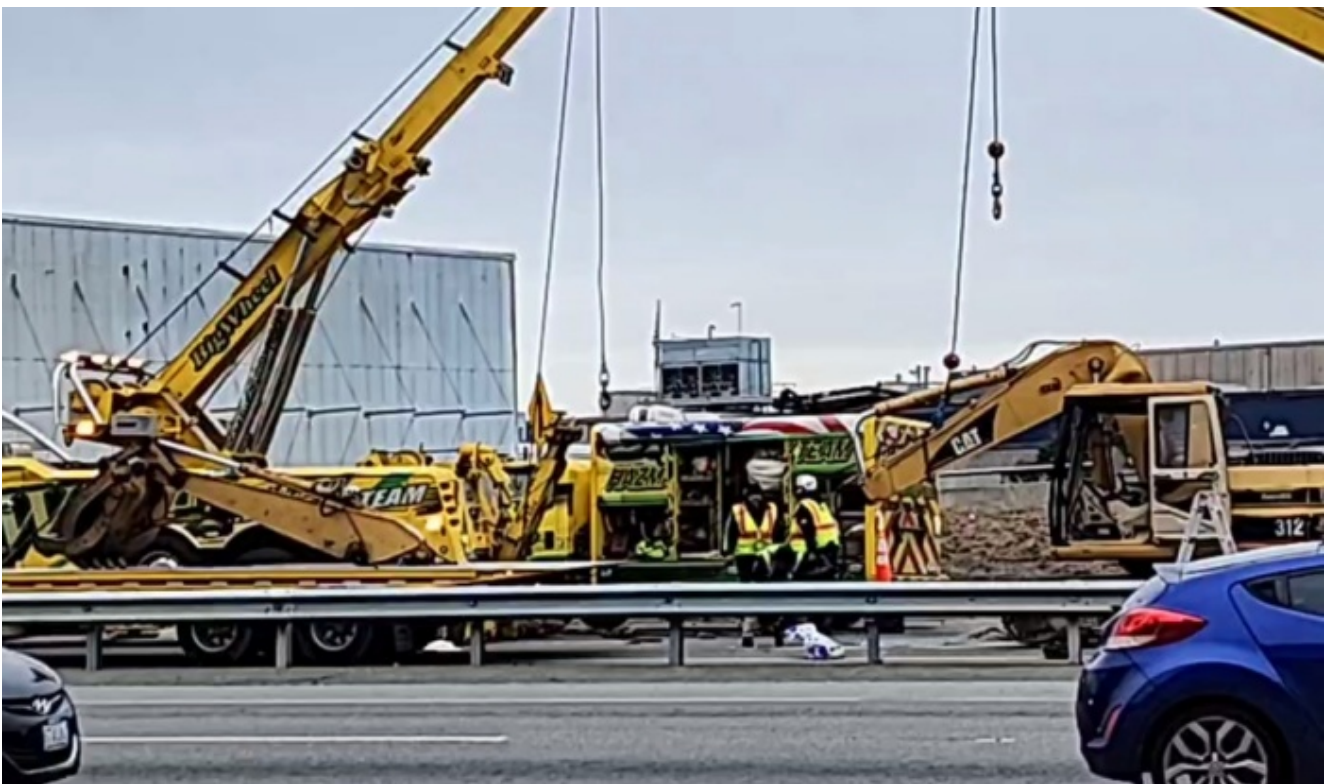
Massachusetts State Police are the lead on this accident investigation.”



Pamela Verissimo photo.



Carlos Pimental Felix photo.



Carlos Pimental Felix photo.



Carlos Pimental Felix photo.



Carlos Pimental Felix photo.



Carlos Pimental Felix photo.



Carlos Pimental Felix photo.

Video by Carlos Pimental Felix: