

The South Coast Hot Jobs List

– 16 Feb 2014

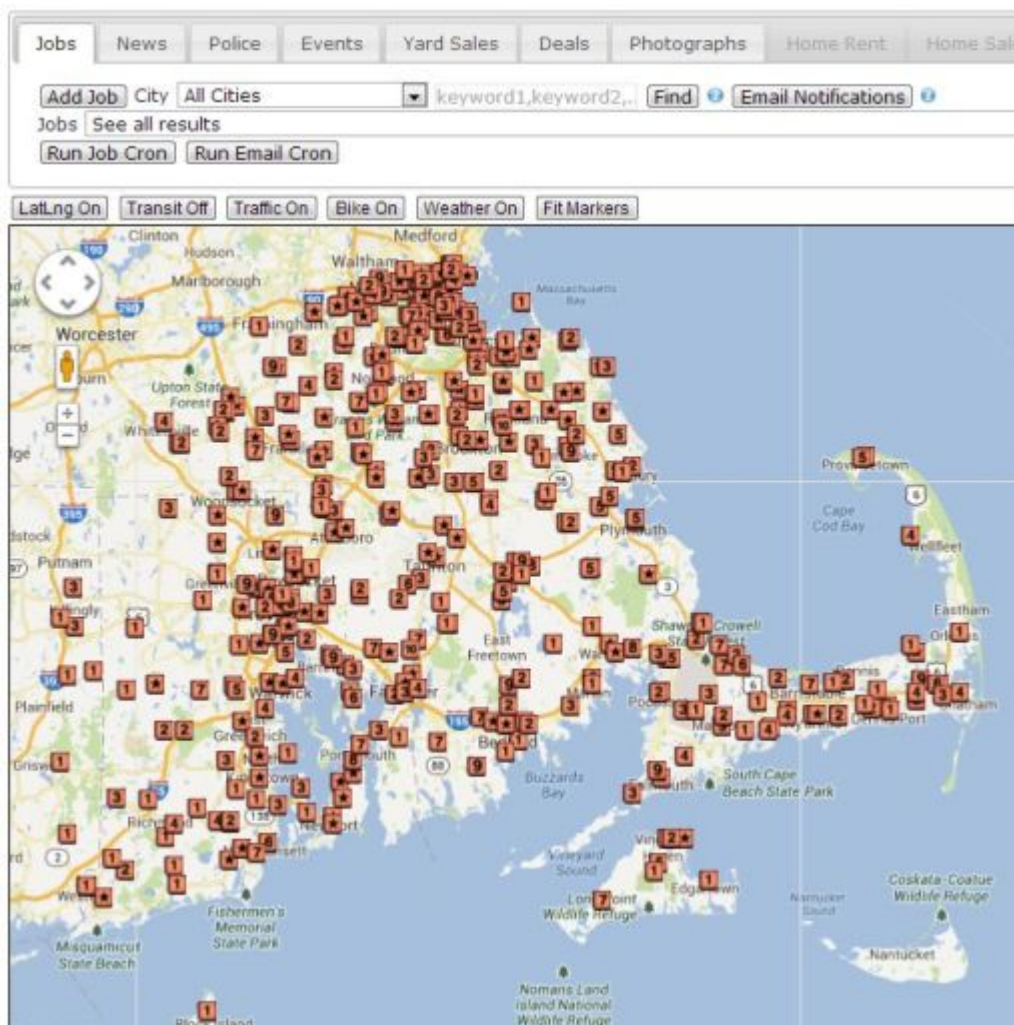


by
Michael
Silvia

The Greater New Bedford unemployment rate is much higher than the rest of Massachusetts, but believe it or not there really are a lot of jobs available for qualified applicants. Sometimes the barrier to a new job can be the lack of information on available job openings. To solve this, each week New Bedford Guide will be working with the New Directions Southcoast (also known as the Greater New Bedford Career Center) and pulling jobs from our **jobs database** to inform job seekers about the hottest jobs in the area. We will define “Hot Jobs” as those jobs that need to be filled by the employer immediately. For those looking to search some large job databases, checkout my **Best Job Search Resources for New Bedford Residents article**. Unless noted otherwise, those interested in these positions or want more information should go to the Greater New Bedford Career Center at 618 Acushnet Avenue. Be sure to also check out our Job Portal to find jobs by location on a map: http://www.newbedfordguide.com/map-page#pm_jobs_tab. Want to get e-mail notifications for new jobs? Checkout our **e-mail subscription service**.

If there is not a link to applying for one of the jobs listed, contact Sharon Martin, Business Services Representative at 508-990-4115 or feel free to stop by the Greater New Bedford Career Center. These positions are posted on

mass.gov/jobquest.



Here are the Hot Jobs from the Greater New Bedford Career Center as of February, 16th, 2014:

1. Manufacturing Consortium Director #3666660 – JOB SUMMARY: Provide direction and oversight of the Southeastern Massachusetts Advanced Manufacturing Consortium (SMAMC) to ascertain and document regional workforce and economic development needs. Identify, analyze and document regional manufacturing base and work with manufacturing partners, relevant training providers and others to develop mutual, executable commitments focused on incumbent manufacturing staff development, prospective employee recruitment, training, and hiring to ensure sustainable advanced manufacturing regional job growth. Using labor market information and other tools, develop timely, business

driven projects that strengthen and expand the Southeastern Massachusetts advanced manufacturing job base. This position reports directly to the Executive Director of the Greater New Bedford Workforce Investment Board with a dotted line reporting relationship to the WIB Executive Directors in the 4 other WIB regions. Extensive travel is required within the Southeastern Massachusetts region. Deadline to Apply is Monday, February 17th, 2014.

2. After School Program Site Monitor #3666541 – Assists the Site Supervisor in maintaining and supervising various programs for children. Serves as a mentor and academic support supervisor for a group of 10-15 children. Provides daily academic support to group of 10-15 elementary age children. Supervises daily activities such as physical fitness, arts and crafts, and more. Responsible for providing a safe place for kids to learn and have fun. The City of New Bedford has a Residency Requirement.

3. Embroidery Machine Operator #3666524 – 1st and 2nd shifts available. Will train the right candidate. Must demonstrate the ability to speak, read and follow directions in English. Must be able to work in a fast paced environment, read orders, arrange garments on embroidery machine, thread and operate machinery. Must be able to walk, bend, push and pull for extended period of time. The Embroidery Machine Operator is responsible for operating 2, 6, or 18 head embroidery machines to accurately embroider logos and appliques on garments and headwear. The Embroidery Machine Operator is responsible for quality while ensuring on-time delivery.

4. Sales Associate #3666499 – Formal wear Sales Associate needed. Must have retail sales experience, excellent customer service skills and computer knowledge. You must be flexible. Hours of operation are Monday through Saturday from 10:00am to 8:00pm.

5. Receptionist/Medical #3666490 -This position will perform a

variety of receptionist office clerical and related duties. Previous medical office experience preferred. Good computer skills required. Excellent interpersonal skills required. Must have at least 2 years' experience.

6. Data Entry Warehouse Clerk (Part-Time) #3681452 – Data Entry Warehouse Clerk needed part time for a party supply distributor. Must have excellent computer and data entry skills. Inventory scanning is important. Reliability and dependability is a MUST. Hours are flexible and employer is willing to work with you.

7. Welders #3681457 – Mig welder- First shift Full time. Welding pipes and converters in production environment. Some metal fabrication to follow. 1 year welding experience required and fabrication experience a plus. Health Insurance and other benefits available. Drug screening. Apply in person and be ready for possible welding test.

Here are some jobs in the New Bedford area from the **NewBedfordGuide.com jobs database**:

1. English Teacher – City on a Hill Charter School (New Bedford). Full details and application process **here**.

2. Baker – Night – Panera Bread (Dartmouth). Full details and application process **here**.

3. Part-time Teller – The Rockland Trust Company (Fairhaven). Full details and application process **here**.

4. Store Co-Manager – Home Depot (Dartmouth). Full details and application process **here**.

5. Specimen Collector – Optimum Labs. Full details and application process **here**.

Be sure to also check out our Job Portal to find jobs by location on a map: http://www.newbedfordguide.com/map-page#pm_jobs_tab. Want to

get e-mail notifications for new jobs? Checkout our **e-mail subscription service**.