

Grinch of a storm to impact greater New Bedford area, SouthCoast Massachusetts

"We are closely monitoring an impactful storm expected to arrive late Thursday and last until early Saturday morning.

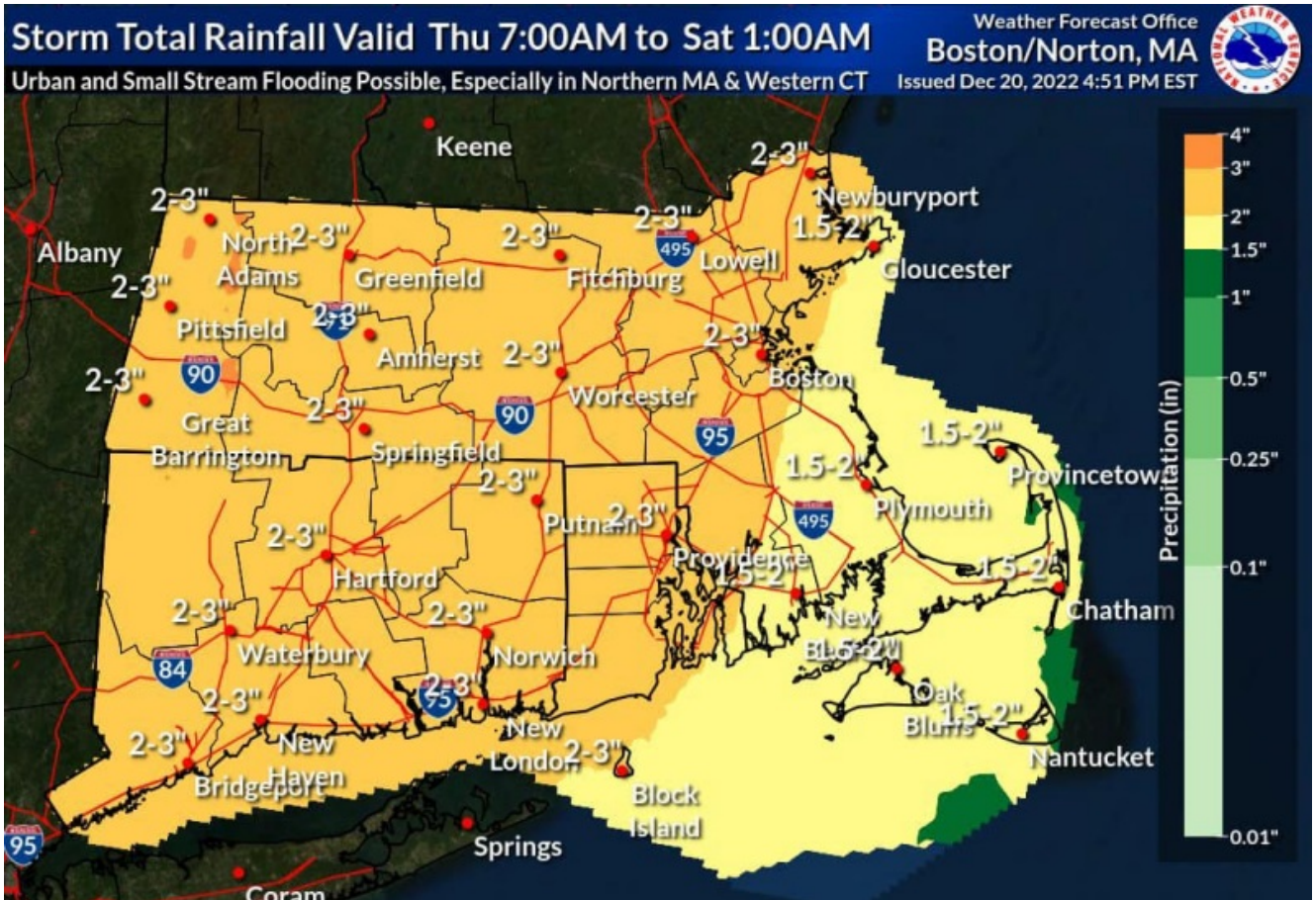
Hazards/Impacts:

- ? Damaging winds up to 65 mph. Power outages are possible.
- ? Locally heavy rainfall of 2+ inches.
- ? Minor to moderate coastal flooding Friday.
- ? Minor to moderate river flooding is possible.

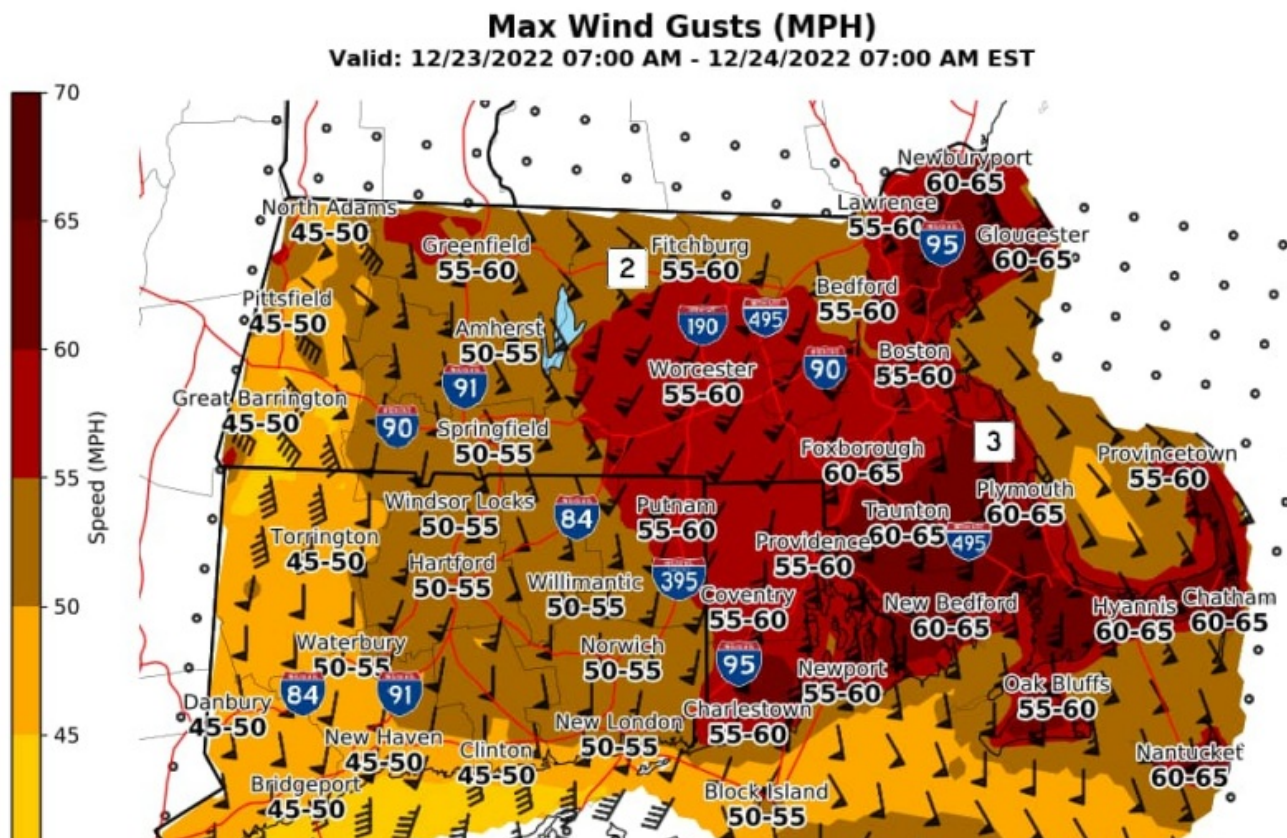
The time to prepare is now:

- ▲ Be #WeatherAware. Keep a close eye on the forecast. Adjust holiday travel plans accordingly.
- ? Secure outdoor holiday decorations to prevent them from being damaged.
- ? Test basement sump pumps if you live in a low-lying area.

We remain in constant communication with the U.S. National Weather Service offices in Norton & Albany and will continue to post updates as they become available." -Massachusetts Emergency Management Agency.



US National Weather Service Boston MA photo.



US National Weather Service Boston MA photo.

Minor to Moderate Coastal Flooding

Weather Forecast Office
Boston/Norton, MA
Issued Dec 20, 2022 4:41 PM EST

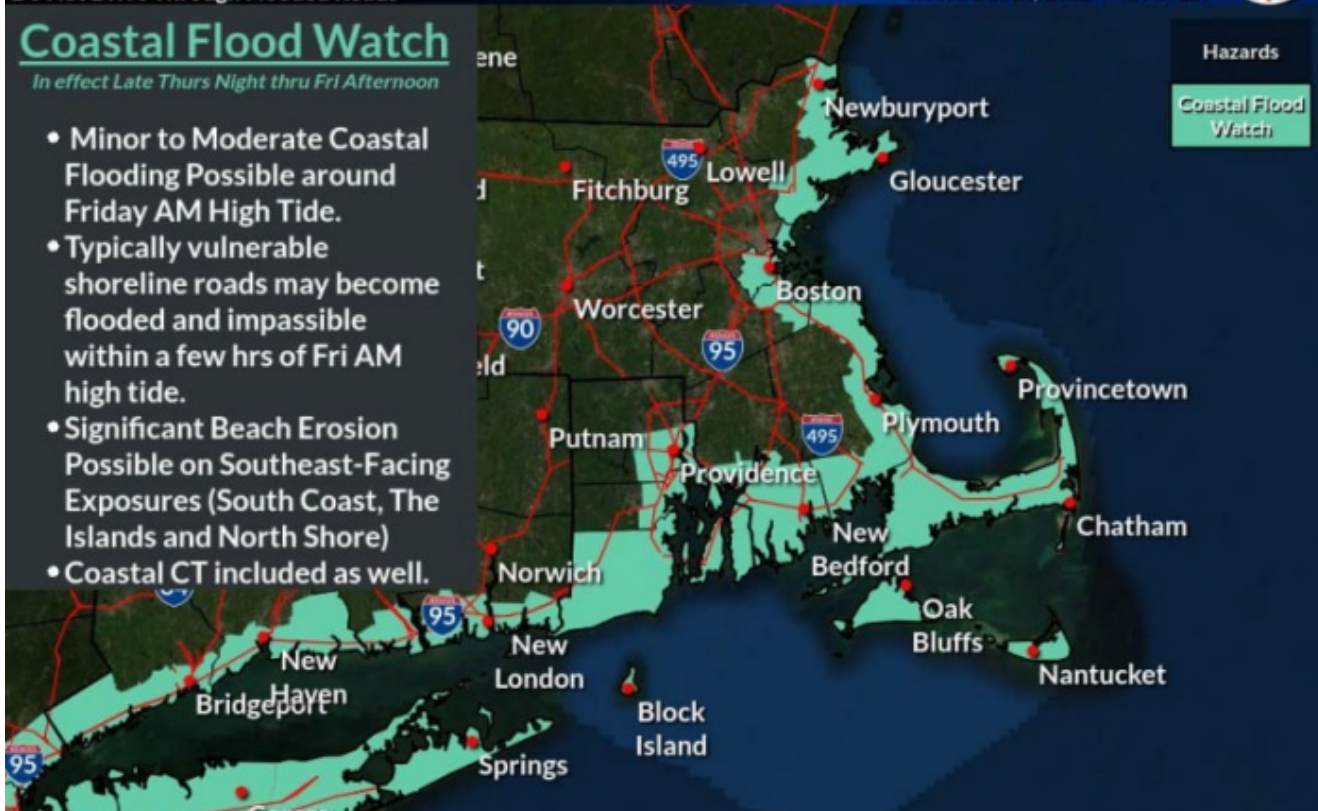


Do Not Drive Through Flooded Roads

Coastal Flood Watch

In effect Late Thurs Night thru Fri Afternoon

- Minor to Moderate Coastal Flooding Possible around Friday AM High Tide.
- Typically vulnerable shoreline roads may become flooded and impassible within a few hrs of Fri AM high tide.
- Significant Beach Erosion Possible on Southeast-Facing Exposures (South Coast, The Islands and North Shore)
- Coastal CT included as well.



US National Weather Service Boston MA photo.